

WNT7B rabbit pAb**Cat#: orb772109 (Manual)**

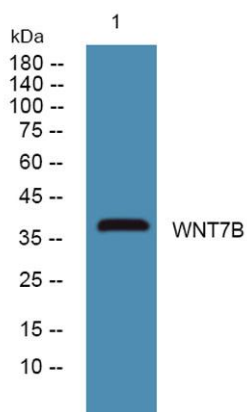
For research use only. Not intended for diagnostic use.

Product Name	WNT7B rabbit pAb
Host species	Rabbit
Applications	WB;ELISA
Species Cross-Reactivity	Human;Mouse
Recommended dilutions	WB 1:500-2000 ELISA 1:5000-20000
Immunogen	Synthesized peptide derived from human protein . at AA range: 110-190
Specificity	WNT7B Polyclonal Antibody detects endogenous levels of protein.
Formulation	Liquid in PBS containing 50% glycerol, and 0.02% sodium azide..
Storage	Store at -20°C. Avoid repeated freeze-thaw cycles.
Protein Name	Protein Wnt-7b
Gene Name	WNT7B
Cellular localization	Secreted, extracellular space, extracellular matrix . Secreted .
Purification	The antibody was affinity-purified from rabbit antiserum by affinity-chromatography using epitope-specific immunogen.
Clonality	Polyclonal

Concentration	1 mg/ml
Observed band	38kD
Human Gene ID	7477
Human Swiss-Prot Number	P56706
Alternative Names	

Background

This gene is a member of the WNT gene family, which consists of structurally related genes that encode secreted signaling proteins. These proteins have been implicated in oncogenesis and in several developmental processes, including regulation of cell fate and patterning during embryogenesis. Among members of the human WNT family, this gene product is most similar to WNT7A protein. [provided by RefSeq, Oct 2008],



Western blot analysis of lysates from HCT116 cells, primary antibody was diluted at 1:1000, 4°over night