

**MYL6B rabbit pAb****Cat#: orb772087 (Manual)**

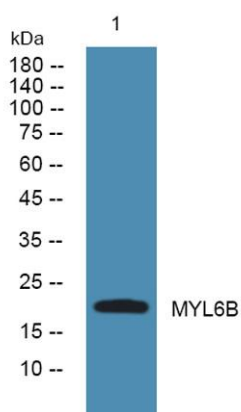
For research use only. Not intended for diagnostic use.

<b>Product Name</b>	MYL6B rabbit pAb
<b>Host species</b>	Rabbit
<b>Applications</b>	WB;ELISA
<b>Species Cross-Reactivity</b>	Human;Rat;Mouse;
<b>Recommended dilutions</b>	WB 1:500-2000 ELISA 1:5000-20000
<b>Immunogen</b>	Synthesized peptide derived from human protein . at AA range: 10-90
<b>Specificity</b>	MYL6B Polyclonal Antibody detects endogenous levels of protein.
<b>Formulation</b>	Liquid in PBS containing 50% glycerol, and 0.02% sodium azide..
<b>Storage</b>	Store at -20°C. Avoid repeated freeze-thaw cycles.
<b>Protein Name</b>	Myosin light chain 6B (Myosin light chain 1 slow-twitch muscle A isoform) (MLC1sa) (Smooth muscle and nonmuscle myosin light chain alkali 6B)
<b>Gene Name</b>	MYL6B MLC1SA
<b>Cellular localization</b>	cytosol,muscle myosin complex,myosin complex,unconventional myosin complex,extracellular exosome,
<b>Purification</b>	The antibody was affinity-purified from rabbit antiserum by affinity-chromatography using epitope-specific immunogen.
<b>Clonality</b>	Polyclonal

<b>Concentration</b>	1 mg/ml
<b>Observed band</b>	22kD
<b>Human Gene ID</b>	140465
<b>Human Swiss-Prot Number</b>	P14649
<b>Alternative Names</b>	

### Background

Myosin is a hexameric ATPase cellular motor protein. It is composed of two heavy chains, two nonphosphorylatable alkali light chains, and two phosphorylatable regulatory light chains. This gene encodes a myosin alkali light chain expressed in both slow-twitch skeletal muscle and in nonmuscle tissue. Alternative splicing results in multiple transcript variants. [provided by RefSeq, Dec 2010],



**Western blot analysis of lysates from HCT116 cells, primary antibody was diluted at 1:1000, 4°over night**