

**IL28B rabbit pAb****Cat#: orb772050 (Manual)**

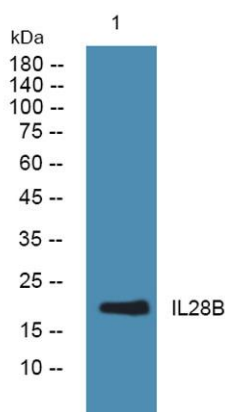
For research use only. Not intended for diagnostic use.

<b>Product Name</b>	IL28B rabbit pAb
<b>Host species</b>	Rabbit
<b>Applications</b>	WB;ELISA
<b>Species Cross-Reactivity</b>	Human;Mouse
<b>Recommended dilutions</b>	WB 1:500-2000 ELISA 1:5000-20000
<b>Immunogen</b>	Synthesized peptide derived from human protein . at AA range: 100-180
<b>Specificity</b>	IL28B Polyclonal Antibody detects endogenous levels of protein.
<b>Formulation</b>	Liquid in PBS containing 50% glycerol, and 0.02% sodium azide..
<b>Storage</b>	Store at -20°C. Avoid repeated freeze-thaw cycles.
<b>Protein Name</b>	Interleukin-28B (IL-28B) (Cytokine Zcyto22) (Interferon lambda-3) (IFN-lambda-3) (Interferon lambda-4) (IFN-lambda-4) (Interleukin-28C) (IL-28C)
<b>Gene Name</b>	IL28B IFNL3 IFNL4 IL28C ZCYTO22
<b>Cellular localization</b>	Secreted .
<b>Purification</b>	The antibody was affinity-purified from rabbit antiserum by affinity-chromatography using epitope-specific immunogen.
<b>Clonality</b>	Polyclonal

<b>Concentration</b>	1 mg/ml
<b>Observed band</b>	21kD
<b>Human Gene ID</b>	282617
<b>Human Swiss-Prot Number</b>	Q8IZI9
<b>Alternative Names</b>	

### Background

This gene encodes a cytokine distantly related to type I interferons and the IL-10 family. This gene, interleukin 28A (IL28A), and interleukin 29 (IL29) are three closely related cytokine genes that form a cytokine gene cluster on a chromosomal region mapped to 19q13. Expression of the cytokines encoded by the three genes can be induced by viral infection. All three cytokines have been shown to interact with a heterodimeric class II cytokine receptor that consists of interleukin 10 receptor, beta (IL10RB) and interleukin 28 receptor, alpha (IL28RA). [provided by RefSeq, Jul 2008],



**Western blot analysis of lysates from Jarkat cells, primary antibody was diluted at 1:1000, 4° over night**