

IFNA7 rabbit pAb**Cat#: orb772043 (Manual)**

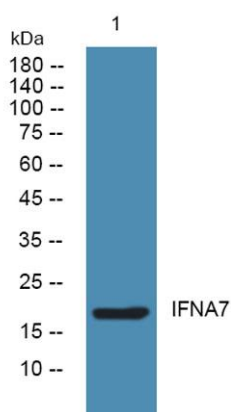
For research use only. Not intended for diagnostic use.

Product Name	IFNA7 rabbit pAb
Host species	Rabbit
Applications	WB;ELISA
Species Cross-Reactivity	Human;Rat;Mouse;
Recommended dilutions	WB 1:500-2000 ELISA 1:5000-20000
Immunogen	Synthesized peptide derived from human protein . at AA range: 1-80
Specificity	IFNA7 Polyclonal Antibody detects endogenous levels of protein.
Formulation	Liquid in PBS containing 50% glycerol, and 0.02% sodium azide..
Storage	Store at -20°C. Avoid repeated freeze-thaw cycles.
Protein Name	Interferon alpha-7 (IFN-alpha-7) (Interferon alpha-J) (LeIF J) (Interferon alpha-J1) (IFN-alpha-J1)
Gene Name	IFNA7
Cellular localization	Secreted.
Purification	The antibody was affinity-purified from rabbit antiserum by affinity-chromatography using epitope-specific immunogen.
Clonality	Polyclonal

Concentration	1 mg/ml
Observed band	20kD
Human Gene ID	3444
Human Swiss-Prot Number	P01567
Alternative Names	

Background

function:Produced by macrophages, IFN-alpha have antiviral activities. Interferon stimulates the production of two enzymes: a protein kinase and an oligoadenylate synthetase.,similarity:Belongs to the alpha/beta interferon family.,



Western blot analysis of lysates from K562 cells, primary antibody was diluted at 1:1000, 4° over night