

**IFNA5 rabbit pAb****Cat#: orb772041 (Manual)**

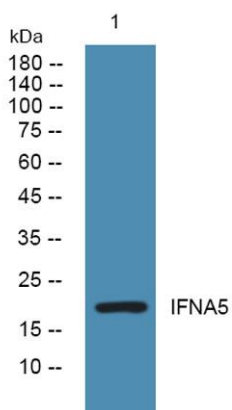
For research use only. Not intended for diagnostic use.

<b>Product Name</b>	IFNA5 rabbit pAb
<b>Host species</b>	Rabbit
<b>Applications</b>	WB;ELISA
<b>Species Cross-Reactivity</b>	Human;Rat;Mouse;
<b>Recommended dilutions</b>	WB 1:500-2000 ELISA 1:5000-20000
<b>Immunogen</b>	Synthesized peptide derived from human protein . at AA range: 30-110
<b>Specificity</b>	IFNA5 Polyclonal Antibody detects endogenous levels of protein.
<b>Formulation</b>	Liquid in PBS containing 50% glycerol, and 0.02% sodium azide..
<b>Storage</b>	Store at -20°C. Avoid repeated freeze-thaw cycles.
<b>Protein Name</b>	Interferon alpha-5 (IFN-alpha-5) (Interferon alpha-61) (Interferon alpha-G) (LeIF G)
<b>Gene Name</b>	IFNA5
<b>Cellular localization</b>	Secreted.
<b>Purification</b>	The antibody was affinity-purified from rabbit antiserum by affinity-chromatography using epitope-specific immunogen.
<b>Clonality</b>	Polyclonal

<b>Concentration</b>	1 mg/ml
<b>Observed band</b>	20kD
<b>Human Gene ID</b>	3442
<b>Human Swiss-Prot Number</b>	P01569
<b>Alternative Names</b>	

#### Background

function:Produced by macrophages, IFN-alpha have antiviral activities. Interferon stimulates the production of two enzymes: a protein kinase and an oligoadenylate synthetase.,similarity:Belongs to the alpha/beta interferon family.,



**Western blot analysis of lysates from Jarkat cells, primary antibody was diluted at 1:1000, 4° over night**