

FGF21 rabbit pAb**Cat#: orb772020 (Manual)**

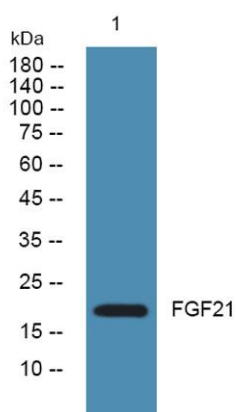
For research use only. Not intended for diagnostic use.

| | |
|---------------------------------|---|
| Product Name | FGF21 rabbit pAb |
| Host species | Rabbit |
| Applications | WB;ELISA |
| Species Cross-Reactivity | Human;Rat;Mouse; |
| Recommended dilutions | WB 1:500-2000 ELISA 1:5000-20000 |
| Immunogen | Synthesized peptide derived from human protein . at AA range: 90-170 |
| Specificity | FGF21 Polyclonal Antibody detects endogenous levels of protein. |
| Formulation | Liquid in PBS containing 50% glycerol, and 0.02% sodium azide.. |
| Storage | Store at -20°C. Avoid repeated freeze-thaw cycles. |
| Protein Name | Fibroblast growth factor 21 (FGF-21) |
| Gene Name | FGF21 UNQ3115/PRO10196 |
| Cellular localization | Secreted . |
| Purification | The antibody was affinity-purified from rabbit antiserum by affinity-chromatography using epitope-specific immunogen. |
| Clonality | Polyclonal |

| | |
|--------------------------------|---------|
| Concentration | 1 mg/ml |
| Observed band | 22kD |
| Human Gene ID | 26291 |
| Human Swiss-Prot Number | Q9NSA1 |
| Alternative Names | |

Background

This gene encodes a member of the fibroblast growth factor (FGF) family. FGF family members possess broad mitogenic and cell survival activities and are involved in a variety of biological processes. This protein is a secreted endocrine factor that functions as a major metabolic regulator. The encoded protein stimulates the uptake of glucose in adipose tissue. [provided by RefSeq, Mar 2016],



Western blot analysis of lysates from KB cells, primary antibody was diluted at 1:1000, 4° over night