

CRLF3 rabbit pAb**Cat#: orb772009 (Manual)**

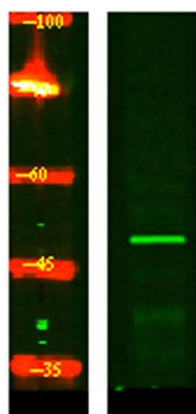
For research use only. Not intended for diagnostic use.

Product Name	CRLF3 rabbit pAb
Host species	Rabbit
Applications	WB;ELISA
Species Cross-Reactivity	Human;Mouse
Recommended dilutions	WB 1:500-2000 ELISA 1:5000-20000
Immunogen	Synthesized peptide derived from human protein . at AA range: 270-350
Specificity	CRLF3 Polyclonal Antibody detects endogenous levels of protein.
Formulation	Liquid in PBS containing 50% glycerol, and 0.02% sodium azide..
Storage	Store at -20°C. Avoid repeated freeze-thaw cycles.
Protein Name	Cytokine receptor-like factor 3 (Cytokine receptor-like molecule 9) (CREME-9) (Cytokine receptor-related protein 4) (Type I cytokine receptor-like factor p48)
Gene Name	CRLF3 CREME9 CYTOR4 P48
Cellular localization	Cytoplasm . The EGFP- and MYC-tagged protein has been shown to be cytoplasmic. .
Purification	The antibody was affinity-purified from rabbit antiserum by affinity-chromatography using epitope-specific immunogen.

Clonality	Polyclonal
Concentration	1 mg/ml
Observed band	48kD
Human Gene ID	51379
Human Swiss-Prot Number	Q8IUI8
Alternative Names	

Background

This gene encodes a cytokine receptor-like factor that may negatively regulate cell cycle progression at the G0/G1 phase. Studies of the related rat protein suggest that it may regulate neuronal morphology and synaptic vesicle biogenesis. This gene is one of several genes located in the neurofibromatosis type I tumor suppressor region on the q arm of chromosome 17, a region that is subject to microdeletions, duplications, chromosomal breaks and rearrangements. Alternative splicing of this gene results in multiple transcript variants. Related pseudogenes have been identified on chromosomes 2 and 5. [provided by RefSeq, Aug 2012],



Western Blot analysis of HeLa lysis, using primary antibody at 1:1000 dilution. Secondary antibody(catalog#:RS23920) was diluted at 1:10000