

**CRLF1 rabbit pAb****Cat#: orb772008 (Manual)**

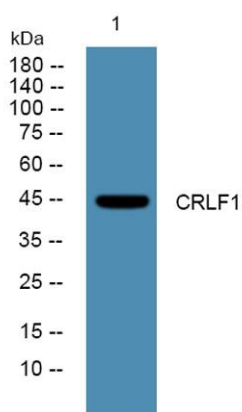
For research use only. Not intended for diagnostic use.

<b>Product Name</b>	CRLF1 rabbit pAb
<b>Host species</b>	Rabbit
<b>Applications</b>	WB;ELISA
<b>Species Cross-Reactivity</b>	Human;Mouse
<b>Recommended dilutions</b>	WB 1:500-2000 ELISA 1:5000-20000
<b>Immunogen</b>	Synthesized peptide derived from human protein . at AA range: 50-130
<b>Specificity</b>	CRLF1 Polyclonal Antibody detects endogenous levels of protein.
<b>Formulation</b>	Liquid in PBS containing 50% glycerol, and 0.02% sodium azide..
<b>Storage</b>	Store at -20°C. Avoid repeated freeze-thaw cycles.
<b>Protein Name</b>	Cytokine receptor-like factor 1 (Cytokine-like factor 1) (CLF-1) (ZcytoR5)
<b>Gene Name</b>	CRLF1 UNQ288/PRO327
<b>Cellular localization</b>	Secreted .
<b>Purification</b>	The antibody was affinity-purified from rabbit antiserum by affinity-chromatography using epitope-specific immunogen.
<b>Clonality</b>	Polyclonal

<b>Concentration</b>	1 mg/ml
<b>Observed band</b>	46kD
<b>Human Gene ID</b>	9244
<b>Human Swiss-Prot Number</b>	O75462
<b>Alternative Names</b>	

### Background

This gene encodes a member of the cytokine type I receptor family. The protein forms a secreted complex with cardiotrophin-like cytokine factor 1 and acts on cells expressing ciliary neurotrophic factor receptors. The complex can promote survival of neuronal cells. Mutations in this gene result in Crisponi syndrome and cold-induced sweating syndrome. [provided by RefSeq, Oct 2009],



**Western blot analysis of lysates from U2OS cells, primary antibody was diluted at 1:1000, 4° over night**