

MOB2 rabbit pAb**Cat#: orb771949 (Manual)**

For research use only. Not intended for diagnostic use.

Product Name	MOB2 rabbit pAb
Host species	Rabbit
Applications	WB;ELISA
Species Cross-Reactivity	Human;Mouse
Recommended dilutions	WB 1:500-2000 ELISA 1:5000-20000
Immunogen	Synthesized peptide derived from human protein . at AA range: 10-90
Specificity	MOB2 Polyclonal Antibody detects endogenous levels of protein.
Formulation	Liquid in PBS containing 50% glycerol, and 0.02% sodium azide..
Storage	Store at -20°C. Avoid repeated freeze-thaw cycles.
Protein Name	MOB kinase activator 2 (HCCA2) (Mob2 homolog) (Mps one binder kinase activator-like 2)
Gene Name	MOB2 HCCA2
Cellular localization	Nucleus . Cytoplasm, perinuclear region .
Purification	The antibody was affinity-purified from rabbit antiserum by affinity-chromatography using epitope-specific immunogen.
Clonality	Polyclonal

Concentration 1 mg/ml

Observed band 26kD

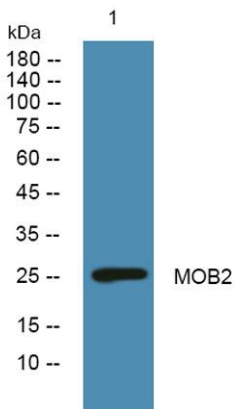
Human Gene ID 81532

Human Swiss-Prot Number Q70IA6

Alternative Names

Background

function:Stimulates the autophosphorylation and kinase activity of STK38 and STK38L.,PTM:Phosphorylated.,similarity:Belongs to the MOB1/phoecin family.,subunit:Binds STK38 and STK38L.,



Western blot analysis of lysates from U2OS cells, primary antibody was diluted at 1:1000, 4° over night