

**NOCT rabbit pAb****Cat#: orb771936 (Manual)**

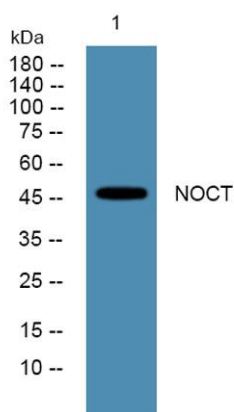
For research use only. Not intended for diagnostic use.

<b>Product Name</b>	NOCT rabbit pAb
<b>Host species</b>	Rabbit
<b>Applications</b>	WB;ELISA
<b>Species Cross-Reactivity</b>	Human;Mouse;Rat
<b>Recommended dilutions</b>	WB 1:500-2000 ELISA 1:5000-20000
<b>Immunogen</b>	Synthesized peptide derived from human protein . at AA range: 100-180
<b>Specificity</b>	NOCT Polyclonal Antibody detects endogenous levels of protein.
<b>Formulation</b>	Liquid in PBS containing 50% glycerol, and 0.02% sodium azide..
<b>Storage</b>	Store at -20°C. Avoid repeated freeze-thaw cycles.
<b>Protein Name</b>	Nocturnin (CCR4 protein homolog)
<b>Gene Name</b>	CCRN4L CCR4 NOC
<b>Cellular localization</b>	Cytoplasm . Nucleus . Cytoplasm, perinuclear region . Mitochondrion .
<b>Purification</b>	The antibody was affinity-purified from rabbit antiserum by affinity-chromatography using epitope-specific immunogen.
<b>Clonality</b>	Polyclonal

<b>Concentration</b>	1 mg/ml
<b>Observed band</b>	47kD
<b>Human Gene ID</b>	25819
<b>Human Swiss-Prot Number</b>	Q9UK39
<b>Alternative Names</b>	

### Background

nocturnin(NOCT) Homo sapiens The protein encoded by this gene is highly similar to Nocturnin, a gene identified as a circadian clock regulated gene in *Xenopus laevis*. This protein and Nocturnin protein share similarity with the C-terminal domain of a yeast transcription factor, carbon catabolite repression 4 (CCR4). The mRNA abundance of a similar gene in mouse has been shown to exhibit circadian rhythmicity, which suggests a role for this protein in clock function or as a circadian clock effector. [provided by RefSeq, Jul 2008],



Western blot analysis of lysates from PC12 cells, primary antibody was diluted at 1:1000, 4° over night