

**KIZ rabbit pAb****Cat#: orb771851 (Manual)**

For research use only. Not intended for diagnostic use.

<b>Product Name</b>	KIZ rabbit pAb
<b>Host species</b>	Rabbit
<b>Applications</b>	WB;ELISA
<b>Species Cross-Reactivity</b>	Human;Rat;Mouse;
<b>Recommended dilutions</b>	WB 1:500-2000 ELISA 1:5000-20000
<b>Immunogen</b>	Synthesized peptide derived from human protein . at AA range: 320-400
<b>Specificity</b>	KIZ Polyclonal Antibody detects endogenous levels of protein.
<b>Formulation</b>	Liquid in PBS containing 50% glycerol, and 0.02% sodium azide..
<b>Storage</b>	Store at -20°C. Avoid repeated freeze-thaw cycles.
<b>Protein Name</b>	Centrosomal protein kizuna (Polo-like kinase 1 substrate 1)
<b>Gene Name</b>	PLK1S1 C20orf19 KIZ NCRNA00153 HT013
<b>Cellular localization</b>	Cytoplasm, cytoskeleton, microtubule organizing center, centrosome . Cytoplasm, cytoskeleton, cilium basal body . Localizes to centrosomes throughout the cell cycle. After centrosome duplication, it usually remains associated only with the mother centrosome, containing the older mature centriole and particles surrounding it. During prophase, additional particles accumulate around both separating centrosomes. Does not accumulate at the microtubule minus ends, but instead localizes to the centrosomes and centrosome-surrounding area in a microtubule-independent and dependent manner, respectively. .

#### Purification

The antibody was affinity-purified from rabbit antiserum by affinity-chromatography using epitope-specific immunogen.

#### Clonality

Polyclonal

#### Concentration

1 mg/ml

#### Observed band

74kD

#### Human Gene ID

55857

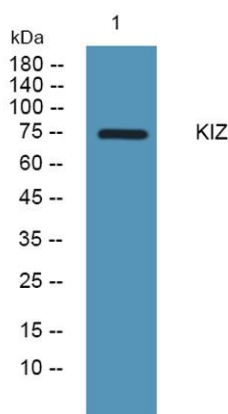
#### Human Swiss-Prot Number

Q2M2Z5

#### Alternative Names

#### Background

kizuna centrosomal protein(KIZ) Homo sapiens The protein encoded by this gene localizes to centrosomes, strengthening and stabilizing the pericentriolar region prior to spindle formation. The encoded protein usually remains with the mother centrosome after centrosomal duplication. Several transcript variants encoding different isoforms have been found for this gene. [provided by RefSeq, Feb 2013],



**Western blot analysis of lysates from KB cells, primary antibody was diluted at 1:1000, 4° over night**