

ROS1 rabbit pAb**Cat#: orb771834 (Manual)**

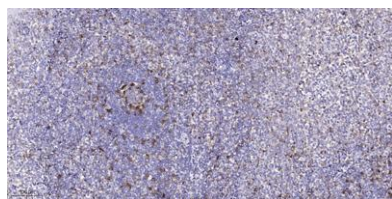
For research use only. Not intended for diagnostic use.

Product Name	ROS1 rabbit pAb
Host species	Rabbit
Applications	IHC;IF
Species Cross-Reactivity	Human;Mouse;Rat
Recommended dilutions	IHC-p 1:50-300 IF 1:50-300
Immunogen	Synthesized peptide derived from human protein . at AA range: 2210-2290
Specificity	ROS1 Polyclonal Antibody detects endogenous levels of protein.
Formulation	Liquid in PBS containing 50% glycerol, and 0.02% sodium azide..
Storage	Store at -20°C. Avoid repeated freeze-thaw cycles.
Protein Name	Proto-oncogene tyrosine-protein kinase ROS (EC 2.7.10.1) (Proto-oncogene c-Ros) (Proto-oncogene c-Ros-1) (Receptor tyrosine kinase c-ros oncogene 1) (c-Ros receptor tyrosine kinase)
Gene Name	ROS1 MCF3 ROS
Cellular localization	Cell membrane ; Single-pass type I membrane protein .
Purification	The antibody was affinity-purified from rabbit antiserum by affinity-chromatography using epitope-specific immunogen.
Clonality	Polyclonal

Concentration	1 mg/ml
Observed band	258kD
Human Gene ID	6098
Human Swiss-Prot Number	P08922
Alternative Names	

Background

This proto-oncogene, highly-expressed in a variety of tumor cell lines, belongs to the sevenless subfamily of tyrosine kinase insulin receptor genes. The protein encoded by this gene is a type I integral membrane protein with tyrosine kinase activity. The protein may function as a growth or differentiation factor receptor. [provided by RefSeq, Jul 2008],



Immunohistochemical analysis of paraffin-embedded human tonsil. 1, Antibody was diluted at 1:200(4° overnight). 2, Tris-EDTA,pH9.0 was used for antigen retrieval. 3,Secondary antibody was diluted at 1:200(room temperature, 45min).