

HIPK1 rabbit pAb**Cat#: orb771828 (Manual)**

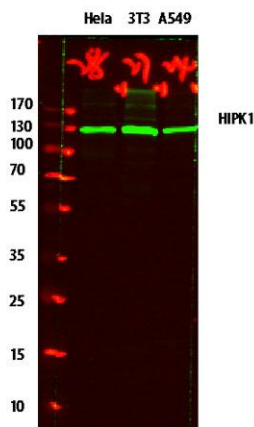
For research use only. Not intended for diagnostic use.

Product Name	HIPK1 rabbit pAb
Host species	Rabbit
Applications	WB;ELISA
Species Cross-Reactivity	Human;Mouse;Rat
Recommended dilutions	WB 1:500-2000 ELISA 1:5000-20000
Immunogen	Synthesized peptide derived from human protein . at AA range: 290-370
Specificity	HIPK1 Polyclonal Antibody detects endogenous levels of protein.
Formulation	Liquid in PBS containing 50% glycerol, and 0.02% sodium azide..
Storage	Store at -20°C. Avoid repeated freeze-thaw cycles.
Protein Name	Homeodomain-interacting protein kinase 1 (EC 2.7.11.1) (Nuclear body-associated kinase 2)
Gene Name	HIPK1 KIAA0630 MYAK NBAK2
Cellular localization	Nucleus . Cytoplasm . Nucleus speckle . Predominantly nuclear. Translocates from nucleus to cytoplasm in response to stress stimuli via SENP1-mediated desumoylation. .
Purification	The antibody was affinity-purified from rabbit antiserum by affinity-chromatography using epitope-specific immunogen.

Clonality	Polyclonal
Concentration	1 mg/ml
Observed band	133kD
Human Gene ID	204851
Human Swiss-Prot Number	Q86Z02

Alternative Names**Background**

homeodomain interacting protein kinase 1(HIPK1) Homo sapiens The protein encoded by this gene belongs to the Ser/Thr family of protein kinases and HIPK subfamily. It phosphorylates homeodomain transcription factors and may also function as a co-repressor for homeodomain transcription factors. Alternative splicing results in four transcript variants encoding four distinct isoforms. [provided by RefSeq, Jul 2008],



Western blot analysis of various lysates, primary antibody was diluted at 1:1000, 4° over night, secondary antibody(cat: RS23920)was diluted at 1:10000, 37° 1hour.