

**KIF1C rabbit pAb****Cat#: orb771824 (Manual)**

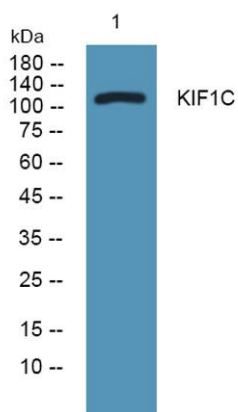
For research use only. Not intended for diagnostic use.

<b>Product Name</b>	KIF1C rabbit pAb
<b>Host species</b>	Rabbit
<b>Applications</b>	WB;ELISA
<b>Species Cross-Reactivity</b>	Human;Mouse;Rat
<b>Recommended dilutions</b>	WB 1:500-2000 ELISA 1:5000-20000
<b>Immunogen</b>	Synthesized peptide derived from human protein . at AA range: 1110-1190
<b>Specificity</b>	KIF1C Polyclonal Antibody detects endogenous levels of protein.
<b>Formulation</b>	Liquid in PBS containing 50% glycerol, and 0.02% sodium azide..
<b>Storage</b>	Store at -20°C. Avoid repeated freeze-thaw cycles.
<b>Protein Name</b>	Kinesin-like protein KIF1C
<b>Gene Name</b>	KIF1C KIAA0706
<b>Cellular localization</b>	Cytoplasm, cytoskeleton .
<b>Purification</b>	The antibody was affinity-purified from rabbit antiserum by affinity-chromatography using epitope-specific immunogen.
<b>Clonality</b>	Polyclonal

<b>Concentration</b>	1 mg/ml
<b>Observed band</b>	121kD
<b>Human Gene ID</b>	10749
<b>Human Swiss-Prot Number</b>	O43896
<b>Alternative Names</b>	

### Background

kinesin family member 1C(KIF1C) Homo sapiens The protein encoded by this gene is a member of the kinesin-like protein family. The family members are microtubule-dependent molecular motors that transport organelles within cells and move chromosomes during cell division. Mutations in this gene are a cause of spastic ataxia 2, autosomal recessive. [provided by RefSeq, May 2014],



**Western blot analysis of lysates from PC12 cells, primary antibody was diluted at 1:1000, 4° over night**