

**FAP-1 rabbit pAb****Cat#: orb771791 (Manual)**

For research use only. Not intended for diagnostic use.

<b>Product Name</b>	FAP-1 rabbit pAb
<b>Host species</b>	Rabbit
<b>Applications</b>	WB;ELISA
<b>Species Cross-Reactivity</b>	Human;Mouse;Rat
<b>Recommended dilutions</b>	WB 1:500-2000, ELISA 1:10000-20000
<b>Immunogen</b>	Synthesized peptide derived from human FAP-1 Polyclonal
<b>Specificity</b>	This antibody detects endogenous levels of FAP-1.
<b>Formulation</b>	Liquid in PBS containing 50% glycerol, 0.5% BSA and 0.02% sodium azide..
<b>Storage</b>	Store at -20°C. Avoid repeated freeze-thaw cycles.
<b>Protein Name</b>	Seprase (EC 3.4.21.-) (170 kDa melanoma membrane-bound gelatinase) (Fibroblast activation protein alpha) (Integral membrane serine protease)
<b>Gene Name</b>	FAP
<b>Cellular localization</b>	[Prolyl endopeptidase FAP]: Cell surface . Cell membrane ; Single-pass type II membrane protein . Cell projection, lamellipodium membrane ; Single-pass type II membrane protein . Cell projection, invadopodium membrane ; Single-pass type II membrane protein . Cell projection, ruffle membrane ; Single-pass type II membrane protein . Membrane ; Single-pass type II membrane protein . Localized on cell surface with lamellipodia and invadopodia membranes and on shed vesicles. Colocalized with DPP4 at invadopodia and lamellipodia membranes of migratory activated endothelial cells in collagenous matrix. Colocalized with DPP4 on endothelial cells of capillary-like microvessels but not large vessels within invasive breast ductal

carcinoma. Anchored and enriched preferentially by integrin alpha-3/bet

#### Purification

The antibody was affinity-purified from rabbit antiserum by affinity-chromatography using epitope-specific immunogen.

#### Clonality

Polyclonal

#### Concentration

1 mg/ml

#### Observed band

150kD

#### Human Gene ID

2191

#### Human Swiss-Prot Number

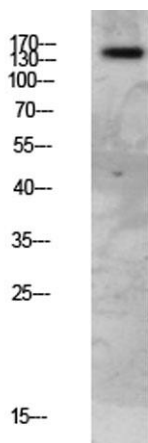
Q12884

#### Alternative Names

Seprase (EC 3.4.21.-) (170 kDa melanoma membrane-bound gelatinase) (Fibroblast activation protein alpha) (Integral membrane serine protease)

#### Background

The protein encoded by this gene is a homodimeric integral membrane gelatinase belonging to the serine protease family. It is selectively expressed in reactive stromal fibroblasts of epithelial cancers, granulation tissue of healing wounds, and malignant cells of bone and soft tissue sarcomas. This protein is thought to be involved in the control of fibroblast growth or epithelial-mesenchymal interactions during development, tissue repair, and epithelial carcinogenesis. Alternatively spliced transcript variants encoding different isoforms have been found for this gene. [provided by RefSeq, Apr 2014],



Western blot analysis of mouse-lung lysate, antibody was diluted at 1000. Secondary antibody(catalog#:RS0002) was diluted at 1:20000