

C1RL rabbit pAb

Cat#: orb771748 (Manual)

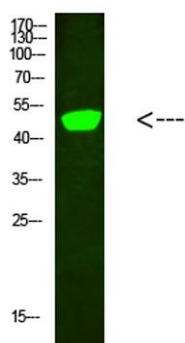
For research use only. Not intended for diagnostic use.

Product Name	C1RL rabbit pAb
Host species	Rabbit
Applications	WB;ELISA
Species Cross-Reactivity	Human;Rat;Mouse;
Recommended dilutions	WB 1:500-2000, ELISA 1:10000-20000
Immunogen	Synthesized peptide derived from human C1RL. at AA range: 371-420
Specificity	C1RL Polyclonal Antibody detects endogenous levels of C1RL
Formulation	Liquid in PBS containing 50% glycerol, 0.5% BSA and 0.02% sodium azide..
Storage	Store at -20°C. Avoid repeated freeze-thaw cycles.
Protein Name	C1RL
Gene Name	C1RL
Cellular localization	Secreted .
Purification	The antibody was affinity-purified from rabbit antiserum by affinity-chromatography using epitope-specific immunogen.
Clonality	Polyclonal

Concentration	1 mg/ml
Observed band	53kD
Human Gene ID	51279
Human Swiss-Prot Number	Q9NZP8
Alternative Names	Complement C1r subcomponent-like protein (C1r-LP) (C1r-like protein) (EC 3.4.21.-) (C1r-like serine protease analog protein) (CLSPa)

Background

caution:Does not associate with the C1 complex. According to PubMed:15385675 doesn't cleave the proform of complement C1s.,function:Mediates the proteolytic cleavage of HP/haptoglobin in the endoplasmic reticulum.,induction:Up-regulated in monocytes and dendritic cells (DC) undergoing maturation or activation.,similarity:Belongs to the peptidase S1 family.,similarity:Contains 1 CUB domain.,similarity:Contains 1 peptidase S1 domain.,tissue specificity:Highly expressed in placenta, liver, kidney, pancreas, moderately in lung, spleen, prostate, ovary, colon, and PBL, and weakly in heart, skeletal muscle, thymus, testis, and small intestine. Expressed in PC-3 (prostate adenocarcinoma) and SK-OV-3 (ovary adenocarcinoma) cells, but not in LoVo and HT-29 (colon adenocarcinoma), SMMC7721 (hepatocellular carcinoma), CaoV-3 (ovary adenocarcinoma), HeLa (cervix epithelioid carcinoma), MCF-7 (breast adenocarcinoma), U251 (glioma) or A549 (lung carcinoma) cells. Widely expressed in myeloid leukemia cell lines, including K-562 (chronic myelogenous leukemia), THP-1 (myelomonocytic leukemia), HL-60 and NB4 (promyelocytic leukemia), and KG-1 (acute myelogenous leukemia) cells. Expressed mainly in the liver and in serum (at protein level).,



Western Blot analysis of hela cells using primary antibody diluted at 1:500(4°C overnight). Secondary antibody:Goat Anti-rabbit IgG IRDye 800(diluted at 1:5000, 25°C, 1 hour)