

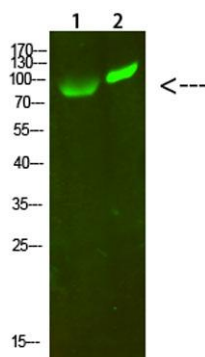
GCK/GLK rabbit pAb**Cat#: orb771736 (Manual)**

For research use only. Not intended for diagnostic use.

Product Name	GCK/GLK rabbit pAb
Host species	Rabbit
Applications	WB;ELISA
Species Cross-Reactivity	Human;Rat
Recommended dilutions	WB 1:500-2000, ELISA 1:10000-20000
Immunogen	Synthesized peptide derived from human GCK/GLK. at AA range: 221-270
Specificity	GCK/GLK Polyclonal Antibody detects endogenous levels of GCK/GLK
Formulation	Liquid in PBS containing 50% glycerol, 0.5% BSA and 0.02% sodium azide..
Storage	Store at -20°C. Avoid repeated freeze-thaw cycles.
Protein Name	GCK/GLK
Gene Name	MAP4K2/MAP4K3
Cellular localization	Cytoplasm . Basolateral cell membrane ; Peripheral membrane protein . Golgi apparatus membrane ; Peripheral membrane protein .
Purification	The antibody was affinity-purified from rabbit antiserum by affinity-chromatography using epitope-specific immunogen.
Clonality	Polyclonal

Concentration	1 mg/ml
Observed band	100kD
Human Gene ID	5871/8491
Human Swiss-Prot Number	Q12851/Q8IVH8
Alternative Names	Mitogen-activated protein kinase kinase kinase 2 (EC 2.7.11.1) (B lymphocyte serine/threonine-protein kinase) (Germinal center kinase) (GC kinase) (MAPK/ERK kinase kinase kinase 2) (MEK kinase kinase 2) (MEKKK 2) (Rab8-interacting protein) Mitogen-

Background mitogen-activated protein kinase kinase kinase 2(MAP4K2) Homo sapiens The protein encoded by this gene is a member of the serine/threonine protein kinase family. Although this kinase is found in many tissues, its expression in lymphoid follicles is restricted to the cells of germinal centre, where it may participate in B-cell differentiation. This kinase can be activated by TNF-alpha, and has been shown to specifically activate MAP kinases. This kinase is also found to interact with TNF receptor-associated factor 2 (TRAF2), which is involved in the activation of MAP3K1/MEKK1. Alternative splicing results in multiple transcript variants. [provided by RefSeq, Apr 2015],



Western Blot analysis of 1,293T 2,hela cells using primary antibody diluted at 1:1000(4°C overnight). Secondary antibody:Goat Anti-rabbit IgG IRDye 800(diluted at 1:5000, 25°C, 1 hour)