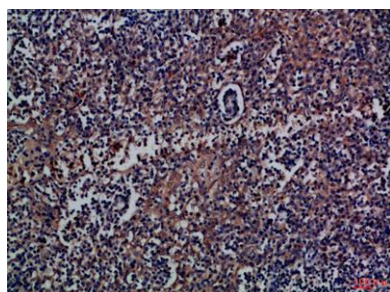


**CD300a rabbit pAb****Cat#: orb771669 (Manual)**

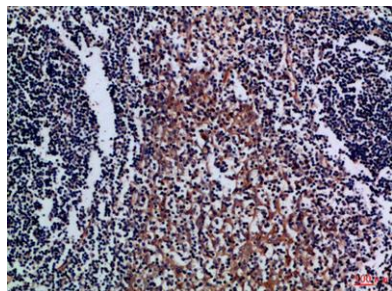
For research use only. Not intended for diagnostic use.

<b>Product Name</b>	CD300a rabbit pAb
<b>Host species</b>	Rabbit
<b>Applications</b>	IHC;IF;ELISA
<b>Species Cross-Reactivity</b>	Human;Rat;Mouse;
<b>Recommended dilutions</b>	IHC-p 1:50-200, ELISA 1:10000-20000
<b>Immunogen</b>	Synthetic peptide from human protein at AA range: 141-190
<b>Specificity</b>	The antibody detects endogenous CD300a
<b>Formulation</b>	Liquid in PBS containing 50% glycerol, 0.5% BSA and 0.02% sodium azide..
<b>Storage</b>	Store at -20°C. Avoid repeated freeze-thaw cycles.
<b>Protein Name</b>	CMRF35-like molecule 8 (CLM-8) (CD300 antigen-like family member A) (CMRF-35-H9) (CMRF35-H9) (CMRF35-H) (IRC1/IRC2) (Immunoglobulin superfamily member 12) (IgSF12) (Inhibitory receptor protein 60) (IR
<b>Gene Name</b>	CD300A CMRF35H IGSF12 HSPC083
<b>Cellular localization</b>	Cell membrane ; Single-pass type I membrane protein .
<b>Purification</b>	The antibody was affinity-purified from rabbit antiserum by affinity-chromatography using epitope-specific immunogen.

<b>Clonality</b>	Polyclonal
<b>Concentration</b>	1 mg/ml
<b>Observed band</b>	
<b>Human Gene ID</b>	11314
<b>Human Swiss-Prot Number</b>	Q9UGN4
<b>Alternative Names</b>	CMRF35-like molecule 8 (CLM-8;CD300 antigen-like family member A;CMRF-35-H9;CMRF35-H9;CMRF35-H;IRC1/IRC2;Immunoglobulin superfamily member 12;IgSF12;Inhibitory receptor protein 60;IRp60;NK inhibitory receptor;CD antigen CD300a)
<b>Background</b>	CD300a molecule(CD300A) Homo sapiens This gene encodes a member of the CD300 glycoprotein family of cell surface proteins found on leukocytes involved in immune response signaling pathways. This gene is located on chromosome 17 in a cluster with all but one of the other family members. Multiple transcript variants encoding different isoforms have been found for this gene. [provided by RefSeq, Feb 2012],



**Immunohistochemical analysis of paraffin-embedded Human-tonsil, antibody was diluted at 1:100**



**Immunohistochemical analysis of paraffin-embedded Human-tonsil, antibody was diluted at 1:100**