

CD24 rabbit pAb

Cat#: orb771660 (Manual)

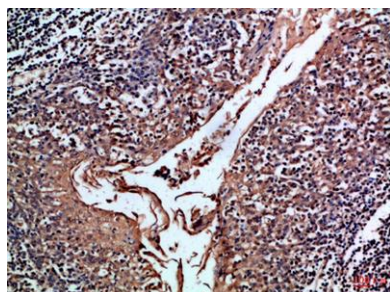
For research use only. Not intended for diagnostic use.

Product Name	CD24 rabbit pAb
Host species	Rabbit
Applications	IHC;IF;ELISA
Species Cross-Reactivity	Human;Rat;Mouse;
Recommended dilutions	IHC-p 1:50-200, ELISA 1:10000-20000
Immunogen	Synthetic peptide from human protein at AA range: 30-60
Specificity	The antibody detects endogenous CD24
Formulation	Liquid in PBS containing 50% glycerol, 0.5% BSA and 0.02% sodium azide..
Storage	Store at -20°C. Avoid repeated freeze-thaw cycles.
Protein Name	Signal transducer CD24 (Small cell lung carcinoma cluster 4 antigen) (CD antigen CD24)
Gene Name	CD24 CD24A
Cellular localization	Cell membrane; Lipid-anchor, GPI-anchor.
Purification	The antibody was affinity-purified from rabbit antiserum by affinity-chromatography using epitope-specific immunogen.
Clonality	Polyclonal

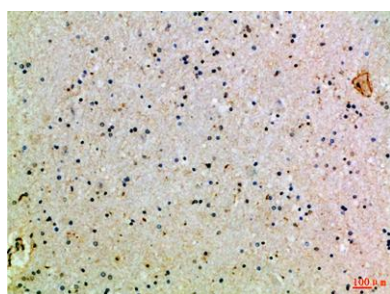
Concentration	1 mg/ml
Observed band	
Human Gene ID	100133941
Human Swiss-Prot Number	P25063
Alternative Names	Signal transducer CD24 (Small cell lung carcinoma cluster 4 antigen;CD antigen CD24)

Background

This gene encodes a sialoglycoprotein that is expressed on mature granulocytes and B cells and modulates growth and differentiation signals to these cells. The precursor protein is cleaved to a short 32 amino acid mature peptide which is anchored via a glycosyl phosphatidylinositol (GPI) link to the cell surface. This gene was missing from previous genome assemblies, but is properly located on chromosome 6. Non-transcribed pseudogenes have been designated on chromosomes 1, 15, 20, and Y. Alternative splicing results in multiple transcript variants. [provided by RefSeq, Apr 2014],



Immunohistochemical analysis of paraffin-embedded Human-tonsil, antibody was diluted at 1:100



Immunohistochemical analysis of paraffin-embedded Human-brain, antibody was diluted at 1:100



Explore. Bioreagents.

www.biorbyt.com