

Integrin α E rabbit pAb**Cat#: orb771654 (Manual)**

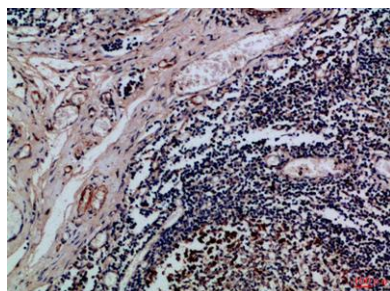
For research use only. Not intended for diagnostic use.

Product Name	Integrin α E rabbit pAb
Host species	Rabbit
Applications	WB;IHC;IF;ELISA
Species Cross-Reactivity	Human;Rat;Mouse;
Recommended dilutions	IHC-p 1:50-200, ELISA 1:10000-20000
Immunogen	Synthetic peptide from human protein at AA range: 710-770
Specificity	The antibody detects endogenous Integrin α E
Formulation	Liquid in PBS containing 50% glycerol, 0.5% BSA and 0.02% sodium azide..
Storage	Store at -20°C. Avoid repeated freeze-thaw cycles.
Protein Name	Integrin alpha-E (HML-1 antigen) (Integrin alpha-IEL) (Mucosal lymphocyte 1 antigen) (CD antigen CD103) [Cleaved into: Integrin alpha-E light chain; Integrin alpha-E heavy chain]
Gene Name	ITGAE
Cellular localization	Membrane; Single-pass type I membrane protein.
Purification	The antibody was affinity-purified from rabbit antiserum by affinity-chromatography using epitope-specific immunogen.

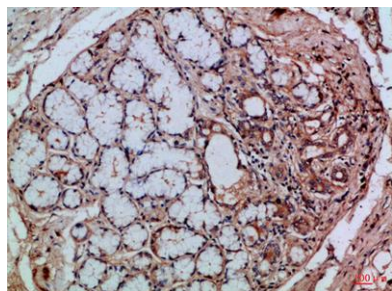
Clonality	Polyclonal
Concentration	1 mg/ml
Observed band	
Human Gene ID	3682
Human Swiss-Prot Number	P38570
Alternative Names	Integrin alpha-E (HML-1 antigen;Integrin alpha-IEL;Mucosal lymphocyte 1 antigen;CD antigen CD103) [Cleaved into: Integrin alpha-E light chain; Integrin alpha-E heavy chain]

Background

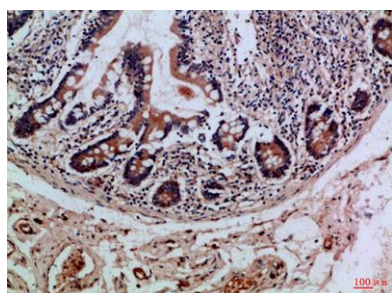
integrin subunit alpha E(ITGAE) Homo sapiens Integrins are heterodimeric integral membrane proteins composed of an alpha chain and a beta chain. This gene encodes an I-domain-containing alpha integrin that undergoes post-translational cleavage in the extracellular domain, yielding disulfide-linked heavy and light chains. In combination with the beta 7 integrin, this protein forms the E-cadherin binding integrin known as the human mucosal lymphocyte-1 antigen. This protein is preferentially expressed in human intestinal intraepithelial lymphocytes (IEL), and in addition to a role in adhesion, it may serve as an accessory molecule for IEL activation. [provided by RefSeq, Jul 2008],



Immunohistochemical analysis of paraffin-embedded Human-tonsil, antibody was diluted at 1:100



Immunohistochemical analysis of paraffin-embedded Human-tonsil, antibody was diluted at 1:100



Immunohistochemical analysis of paraffin-embedded Human-colon, antibody was diluted at 1:100