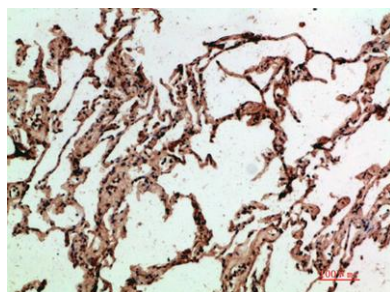


ADI1 rabbit pAb**Cat#: orb771635 (Manual)**

For research use only. Not intended for diagnostic use.

Product Name	ADI1 rabbit pAb
Host species	Rabbit
Applications	IHC;IF;ELISA
Species Cross-Reactivity	Human;Mouse;Rat
Recommended dilutions	IHC-p 1:50-200, ELISA 1:10000-20000
Immunogen	The antiserum was produced against synthesized peptide derived from the Internal region of human ADI1. AA range:71-120
Specificity	The antibody detects endogenous ADI1
Formulation	Liquid in PBS containing 50% glycerol, 0.5% BSA and 0.02% sodium azide..
Storage	Store at -20°C. Avoid repeated freeze-thaw cycles.
Protein Name	1,2-dihydroxy-3-keto-5-methylthiopentene dioxygenase (EC 1.13.11.54) (Acireductone dioxygenase (Fe(2+)-requiring)) (ARD) (Fe-ARD) (Membrane-type 1 matrix metalloproteinase cytoplasmic tail-binding pro
Gene Name	ADI1 MTCBP1 HMFT1638
Cellular localization	Cytoplasm . Nucleus . Cell membrane ; Peripheral membrane protein ; Cytoplasmic side . Localizes to the plasma membrane when complexed to MMP14. .
Purification	The antibody was affinity-purified from rabbit antiserum by affinity-chromatography using epitope-specific immunogen.

Clonality	Polyclonal
Concentration	1 mg/ml
Observed band	
Human Gene ID	55256
Human Swiss-Prot Number	Q9BV57
Alternative Names	1,2-dihydroxy-3-keto-5-methylthiopentene dioxygenase (EC 1.13.11.54;Acireductone dioxygenase (Fe(2+)-requiring);ARD;Fe-ARD;Membrane-type 1 matrix metalloproteinase cytoplasmic tail-binding protein 1;MTCBP-1;Submergence-induced protein-like factor;Sip-L)
Background	This gene encodes an enzyme that belongs to the aci-reductone dioxygenase family of metal-binding enzymes, which are involved in methionine salvage. This enzyme may regulate mRNA processing in the nucleus, and may carry out different functions depending on its localization. Related pseudogenes have been defined on chromosomes 8 and 20. Alternative splicing results in multiple transcript variants encoding different isoforms. [provided by RefSeq, Apr 2015],



Immunohistochemical analysis of paraffin-embedded human-lung, antibody was diluted at 1:200