

**TTN rabbit pAb****Cat#: orb771633 (Manual)**

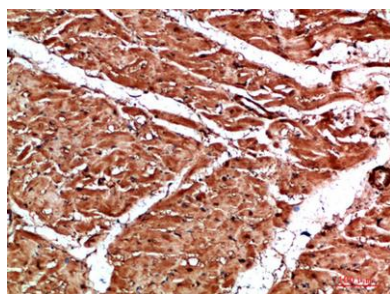
For research use only. Not intended for diagnostic use.

<b>Product Name</b>	TTN rabbit pAb
<b>Host species</b>	Rabbit
<b>Applications</b>	IHC;IF;ELISA
<b>Species Cross-Reactivity</b>	Human;Mouse;Rat
<b>Recommended dilutions</b>	IHC-p 1:50-200, ELISA 1:10000-20000
<b>Immunogen</b>	Synthetic peptide from human protein at AA range: 161-210
<b>Specificity</b>	The antibody detects endogenous TTN
<b>Formulation</b>	Liquid in PBS containing 50% glycerol, 0.5% BSA and 0.02% sodium azide..
<b>Storage</b>	Store at -20°C. Avoid repeated freeze-thaw cycles.
<b>Protein Name</b>	Titin (EC 2.7.11.1) (Connectin) (Rhabdomyosarcoma antigen MU-RMS-40.14)
<b>Gene Name</b>	TTN
<b>Cellular localization</b>	Cytoplasm . Nucleus .
<b>Purification</b>	The antibody was affinity-purified from rabbit antiserum by affinity-chromatography using epitope-specific immunogen.
<b>Clonality</b>	Polyclonal

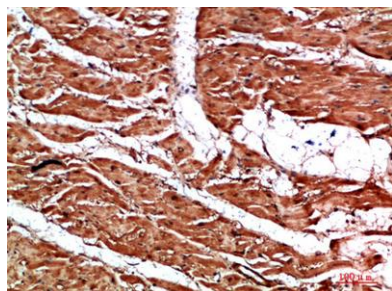
<b>Concentration</b>	1 mg/ml
<b>Observed band</b>	
<b>Human Gene ID</b>	7273
<b>Human Swiss-Prot Number</b>	Q8WZ42
<b>Alternative Names</b>	Titin (EC 2.7.11.1;Connectin;Rhabdomyosarcoma antigen MU-RMS-40.14)

### Background

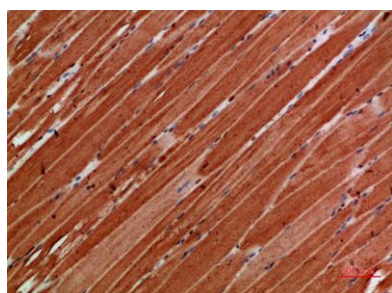
This gene encodes a large abundant protein of striated muscle. The product of this gene is divided into two regions, a N-terminal I-band and a C-terminal A-band. The I-band, which is the elastic part of the molecule, contains two regions of tandem immunoglobulin domains on either side of a PEVK region that is rich in proline, glutamate, valine and lysine. The A-band, which is thought to act as a protein-ruler, contains a mixture of immunoglobulin and fibronectin repeats, and possesses kinase activity. An N-terminal Z-disc region and a C-terminal M-line region bind to the Z-line and M-line of the sarcomere, respectively, so that a single titin molecule spans half the length of a sarcomere. Titin also contains binding sites for muscle associated proteins so it serves as an adhesion template for the assembly of contractile machinery in muscle cells. It has also been identified as a structural protein for chromosomes.



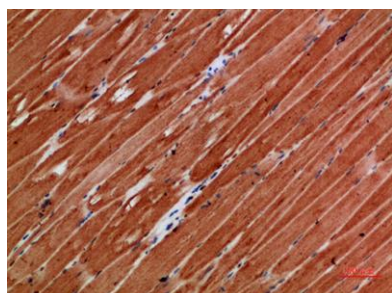
**Immunohistochemical analysis of paraffin-embedded human-heart, antibody was diluted at 1:200**



**Immunohistochemical analysis of paraffin-embedded human-heart, antibody was diluted at 1:200**



**Immunohistochemical analysis of paraffin-embedded human-skeletal-muscle, antibody was diluted at 1:200**



**Immunohistochemical analysis of paraffin-embedded human-skeletal-muscle, antibody was diluted at 1:200**