

**Chordin rabbit pAb****Cat#: orb771629 (Manual)**

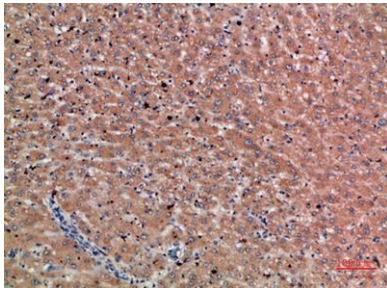
For research use only. Not intended for diagnostic use.

<b>Product Name</b>	Chordin rabbit pAb
<b>Host species</b>	Rabbit
<b>Applications</b>	IHC;IF;ELISA
<b>Species Cross-Reactivity</b>	Human;Mouse;Rat
<b>Recommended dilutions</b>	IHC-p 1:50-200, ELISA 1:10000-20000
<b>Immunogen</b>	The antiserum was produced against synthesized peptide derived from the C-terminal region of human CHR. AA range:905-954
<b>Specificity</b>	The antibody detects endogenous Chordin
<b>Formulation</b>	Liquid in PBS containing 50% glycerol, 0.5% BSA and 0.02% sodium azide..
<b>Storage</b>	Store at -20°C. Avoid repeated freeze-thaw cycles.
<b>Protein Name</b>	Chordin
<b>Gene Name</b>	CHR UNQ217/PRO243
<b>Cellular localization</b>	Secreted .
<b>Purification</b>	The antibody was affinity-purified from rabbit antiserum by affinity-chromatography using epitope-specific immunogen.
<b>Clonality</b>	Polyclonal

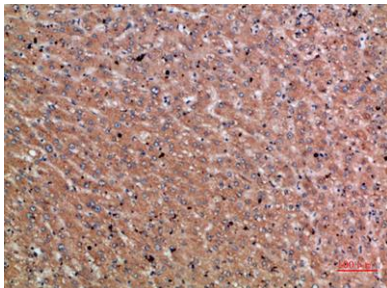
<b>Concentration</b>	1 mg/ml
<b>Observed band</b>	
<b>Human Gene ID</b>	8646
<b>Human Swiss-Prot Number</b>	Q9H2X0
<b>Alternative Names</b>	Chordin

## Background

This gene encodes a secreted protein that dorsalizes early vertebrate embryonic tissues by binding to ventralizing TGF-beta-like bone morphogenetic proteins and sequestering them in latent complexes. The encoded protein may also have roles in organogenesis and during adulthood. It has been suggested that this gene could be a candidate gene for Cornelia de Lange syndrome. Reduced expression of this gene results in enhanced bone regeneration. Alternative splicing results in multiple transcript variants. Other alternative splice variants have been described but their full length sequence has not been determined. [provided by RefSeq, Jan 2015],



**Immunohistochemical analysis of paraffin-embedded human-liver-cancer, antibody was diluted at 1:200**



**Immunohistochemical analysis of paraffin-embedded human-liver-cancer, antibody was diluted at 1:200**



Explore. Bioreagents.

[www.biorbyt.com](http://www.biorbyt.com)