

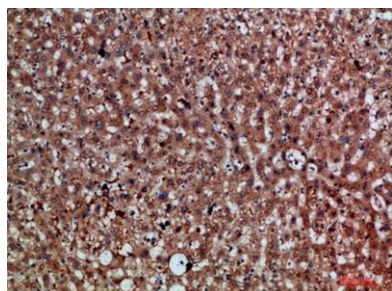
**CDNF rabbit pAb****Cat#: orb771601 (Manual)**

For research use only. Not intended for diagnostic use.

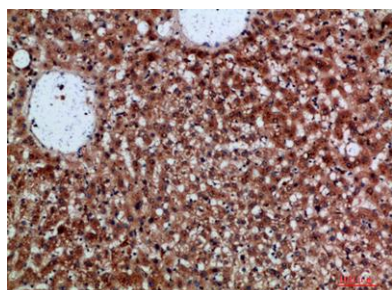
<b>Product Name</b>	CDNF rabbit pAb
<b>Host species</b>	Rabbit
<b>Applications</b>	IHC;IF;ELISA
<b>Species Cross-Reactivity</b>	Human;Rat;Mouse;
<b>Recommended dilutions</b>	IHC-p 1:50-200, ELISA 1:10000-20000
<b>Immunogen</b>	Synthetic peptide from human protein at AA range: 31-80
<b>Specificity</b>	The antibody detects endogenous CDNF
<b>Formulation</b>	Liquid in PBS containing 50% glycerol, 0.5% BSA and 0.02% sodium azide..
<b>Storage</b>	Store at -20°C. Avoid repeated freeze-thaw cycles.
<b>Protein Name</b>	Cerebral dopamine neurotrophic factor (ARMET-like protein 1) (Conserved dopamine neurotrophic factor)
<b>Gene Name</b>	CDNF ARMETL1
<b>Cellular localization</b>	Secreted .
<b>Purification</b>	The antibody was affinity-purified from rabbit antiserum by affinity-chromatography using       epitope-specific immunogen.
<b>Clonality</b>	Polyclonal

<b>Concentration</b>	1 mg/ml
<b>Observed band</b>	
<b>Human Gene ID</b>	441549
<b>Human Swiss-Prot Number</b>	Q49AH0
<b>Alternative Names</b>	Cerebral dopamine neurotrophic factor (ARMET-like protein 1; Conserved dopamine neurotrophic factor)

**Background** CDNF (Cerebral Dopamine Neurotrophic Factor) is a Protein Coding gene. Trophic factor for dopamine neurons. Prevents the 6-hydroxydopamine (6-OHDA)-induced degeneration of dopaminergic neurons. When administered after 6-OHDA-lesioning, restores the dopaminergic function and prevents the degeneration of dopaminergic neurons in substantia nigra (By similarity).



**Immunohistochemical analysis of paraffin-embedded human-liver, antibody was diluted at 1:200**



**Immunohistochemical analysis of paraffin-embedded human-liver, antibody was diluted at 1:200**