

CKR-1 rabbit pAb

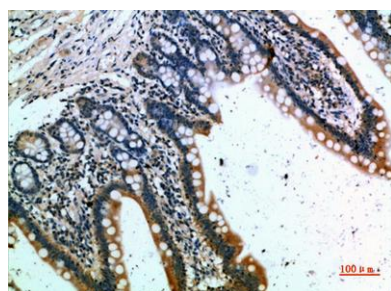
Cat#: orb771568 (Manual)

For research use only. Not intended for diagnostic use.

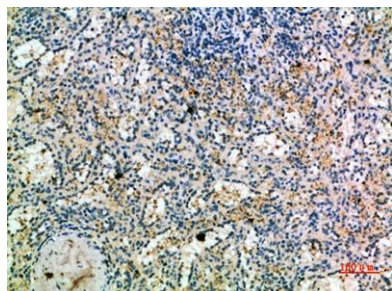
Product Name	CKR-1 rabbit pAb
Host species	Rabbit
Applications	IHC;IF;ELISA
Species Cross-Reactivity	Human;Rat;Mouse;
Recommended dilutions	IHC-p 1:50-200, ELISA 1:10000-20000
Immunogen	Synthetic peptide from human protein at AA range: 151-200
Specificity	The antibody detects endogenous CKR-1
Formulation	Liquid in PBS containing 50% glycerol, 0.5% BSA and 0.02% sodium azide..
Storage	Store at -20°C. Avoid repeated freeze-thaw cycles.
Protein Name	C-C chemokine receptor type 1 (C-C CKR-1) (CC-CKR-1) (CCR-1) (CCR1) (HM145) (LD78 receptor) (Macrophage inflammatory protein 1-alpha receptor) (MIP-1alpha-R) (RANTES-R) (CD antigen CD191)
Gene Name	CCR1 CMKBR1 CMKR1 SCYAR1
Cellular localization	Cell membrane ; Multi-pass membrane protein .
Purification	The antibody was affinity-purified from rabbit antiserum by affinity-chromatography using epitope-specific immunogen.

Clonality	Polyclonal
Concentration	1 mg/ml
Observed band	
Human Gene ID	1230
Human Swiss-Prot Number	P32246
Alternative Names	C-C chemokine receptor type 1 (C-C CKR-1;CC-CKR-1;CCR-1;CCR1;HM145;LD78 receptor;Macrophage inflammatory protein 1-alpha receptor;MIP-1alpha-R;RANTES-R;CD antigen CD191)

Background	<p>This gene encodes a member of the beta chemokine receptor family, which is predicted to be a seven transmembrane protein similar to G protein-coupled receptors. The ligands of this receptor include macrophage inflammatory protein 1 alpha (MIP-1 alpha), regulated on activation normal T expressed and secreted protein (RANTES), monocyte chemoattractant protein 3 (MCP-3), and myeloid progenitor inhibitory factor-1 (MPIF-1). Chemokines and their receptors mediated signal transduction are critical for the recruitment of effector immune cells to the site of inflammation. Knockout studies of the mouse homolog suggested the roles of this gene in host protection from inflammatory response, and susceptibility to virus and parasite. This gene and other chemokine receptor genes, including CCR2, CCRL2, CCR3, CCR5 and CCXCR1, are found to form a gene cluster on chromosome 3p. [provided by RefSeq, Jul 2008]</p>
-------------------	---



Immunohistochemical analysis of paraffin-embedded human small intestine, antibody was diluted at 1:200



Immunohistochemical analysis of paraffin-embedded human-spleen, antibody was diluted at 1:200