

CD151 rabbit pAb**Cat#: orb771558 (Manual)**

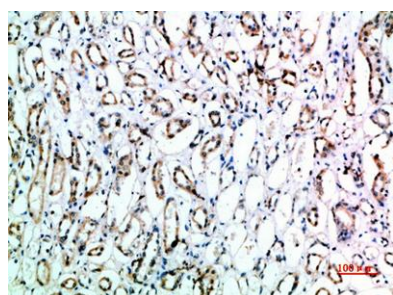
For research use only. Not intended for diagnostic use.

Product Name	CD151 rabbit pAb
Host species	Rabbit
Applications	IHC;IF;ELISA
Species Cross-Reactivity	Human;Mouse;Rat
Recommended dilutions	IHC-p 1:50-200, ELISA 1:10000-20000
Immunogen	Synthetic peptide from human protein at AA range: 91-140
Specificity	The antibody detects endogenous CD151
Formulation	Liquid in PBS containing 50% glycerol, 0.5% BSA and 0.02% sodium azide..
Storage	Store at -20°C. Avoid repeated freeze-thaw cycles.
Protein Name	CD151 antigen (GP27) (Membrane glycoprotein SFA-1) (Platelet-endothelial tetraspan antigen 3) (PETA-3) (Tetraspanin-24) (Tspan-24) (CD antigen CD151)
Gene Name	CD151 TSPAN24
Cellular localization	Membrane; Multi-pass membrane protein.
Purification	The antibody was affinity-purified from rabbit antiserum by affinity-chromatography using epitope-specific immunogen.

Clonality	Polyclonal
Concentration	1 mg/ml
Observed band	
Human Gene ID	977
Human Swiss-Prot Number	P48509
Alternative Names	CD151 antigen (GP27;Membrane glycoprotein SFA-1;Platelet-endothelial tetraspan antigen 3;PETA-3;Tetraspanin-24;Tspan-24;CD antigen CD151)

Background

The protein encoded by this gene is a member of the transmembrane 4 superfamily, also known as the tetraspanin family. Most of these members are cell-surface proteins that are characterized by the presence of four hydrophobic domains. The proteins mediate signal transduction events that play a role in the regulation of cell development, activation, growth and motility. This encoded protein is a cell surface glycoprotein that is known to complex with integrins and other transmembrane 4 superfamily proteins. It is involved in cellular processes including cell adhesion and may regulate integrin trafficking and/or function. This protein enhances cell motility, invasion and metastasis of cancer cells. Multiple alternatively spliced transcript variants that encode the same protein have been described for this gene. [provided by RefSeq, Jul 2008],



Immunohistochemical analysis of paraffin-embedded human-kidney, antibody was diluted at 1:200