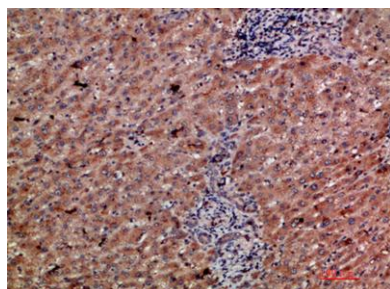


CD303 rabbit pAb**Cat#: orb771556 (Manual)**

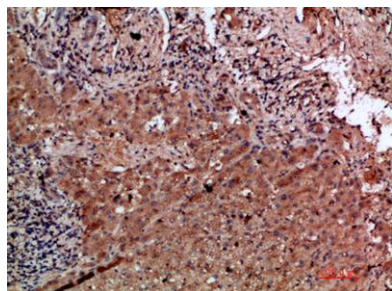
For research use only. Not intended for diagnostic use.

Product Name	CD303 rabbit pAb
Host species	Rabbit
Applications	IHC;IF;ELISA
Species Cross-Reactivity	Human;Rat;Mouse;
Recommended dilutions	IHC-p 1:50-200, ELISA 1:10000-20000
Immunogen	Synthetic peptide from human protein at AA range: 91-140
Specificity	The antibody detects endogenous CD303
Formulation	Liquid in PBS containing 50% glycerol, 0.5% BSA and 0.02% sodium azide..
Storage	Store at -20°C. Avoid repeated freeze-thaw cycles.
Protein Name	C-type lectin domain family 4 member C (Blood dendritic cell antigen 2) (BDCA-2) (C-type lectin superfamily member 7) (Dendritic lectin) (CD antigen CD303)
Gene Name	CLEC4C BDCA2 CLECSF11 CLECSF7 DLEC HECL UNQ9361/PRO34150
Cellular localization	Cell membrane ; Single-pass type II membrane protein .
Purification	The antibody was affinity-purified from rabbit antiserum by affinity-chromatography using epitope-specific immunogen.

Clonality	Polyclonal
Concentration	1 mg/ml
Observed band	
Human Gene ID	170482
Human Swiss-Prot Number	Q8WTT0
Alternative Names	C-type lectin domain family 4 member C (Blood dendritic cell antigen 2;BDCA-2;C-type lectin superfamily member 7;Dendritic lectin;CD antigen CD303)
Background	This gene encodes a member of the C-type lectin/C-type lectin-like domain (CTL/CTLD) superfamily. Members of this family share a common protein fold and have diverse functions, such as cell adhesion, cell-cell signalling, glycoprotein turnover, and roles in inflammation and immune response. The encoded type 2 transmembrane protein may play a role in dendritic cell function. Two transcript variants encoding distinct isoforms have been identified for this gene. [provided by RefSeq, Jul 2008],



Immunohistochemical analysis of paraffin-embedded human-liver-cancer, antibody was diluted at 1:200



Immunohistochemical analysis of paraffin-embedded human-liver-cancer, antibody was diluted at 1:200