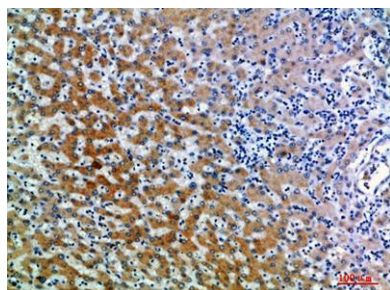


CD109 rabbit pAb**Cat#: orb771553 (Manual)**

For research use only. Not intended for diagnostic use.

Product Name	CD109 rabbit pAb
Host species	Rabbit
Applications	IHC;IF;ELISA
Species Cross-Reactivity	Human;Rat;Mouse;
Recommended dilutions	IHC-p 1:50-200, ELISA 1:10000-20000
Immunogen	Synthetic peptide from human protein at AA range: 751-800
Specificity	The antibody detects endogenous CD109
Formulation	Liquid in PBS containing 50% glycerol, 0.5% BSA and 0.02% sodium azide..
Storage	Store at -20°C. Avoid repeated freeze-thaw cycles.
Protein Name	CD109 antigen (150 kDa TGF-beta-1-binding protein) (C3 and PZP-like alpha-2-macroglobulin domain-containing protein 7) (Platelet-specific Gov antigen) (p180) (r150) (CD antigen CD109)
Gene Name	CD109 CPAMD7
Cellular localization	Cell membrane ; Lipid-anchor, GPI-anchor .
Purification	The antibody was affinity-purified from rabbit antiserum by affinity-chromatography using epitope-specific immunogen.

Clonality	Polyclonal
Concentration	1 mg/ml
Observed band	
Human Gene ID	135228
Human Swiss-Prot Number	Q6YHK3
Alternative Names	CD109 antigen (150 kDa TGF-beta-1-binding protein;C3 and PZP-like alpha-2-macroglobulin domain-containing protein 7;Platelet-specific Gov antigen;p180;r150;CD antigen CD109)
Background	This gene encodes a glycosyl phosphatidylinositol (GPI)-linked glycoprotein that localizes to the surface of platelets, activated T-cells, and endothelial cells. The protein binds to and negatively regulates signalling by transforming growth factor beta (TGF-beta). Multiple transcript variants encoding different isoforms have been found for this gene. [provided by RefSeq, Apr 2014],



Immunohistochemical analysis of paraffin-embedded human-liver, antibody was diluted at 1:200