

CD108 rabbit pAb**Cat#: orb771552 (Manual)**

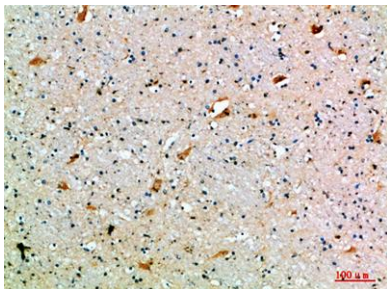
For research use only. Not intended for diagnostic use.

Product Name	CD108 rabbit pAb
Host species	Rabbit
Applications	IHC;IF;ELISA
Species Cross-Reactivity	Human;Mouse;Rat
Recommended dilutions	IHC-p 1:50-200, ELISA 1:10000-20000
Immunogen	Synthetic peptide from human protein at AA range: 101-150
Specificity	The antibody detects endogenous CD108
Formulation	Liquid in PBS containing 50% glycerol, 0.5% BSA and 0.02% sodium azide..
Storage	Store at -20°C. Avoid repeated freeze-thaw cycles.
Protein Name	Semaphorin-7A (CDw108) (JMH blood group antigen) (John-Milton-Hargen human blood group Ag) (Semaphorin-K1) (Sema K1) (Semaphorin-L) (Sema L) (CD antigen CD108)
Gene Name	SEMA7A CD108 SEMAL
Cellular localization	Cell membrane ; Lipid-anchor, GPI-anchor ; Extracellular side . Detected in a punctate pattern on the cell membrane of basal and supra-basal skin keratinocytes.
Purification	The antibody was affinity-purified from rabbit antiserum by affinity-chromatography using epitope-specific immunogen.

Clonality	Polyclonal
Concentration	1 mg/ml
Observed band	
Human Gene ID	8482
Human Swiss-Prot Number	O75326
Alternative Names	Semaphorin-7A (CDw108;JMH blood group antigen;John-Milton-Hagen human blood group Ag;Semaphorin-K1;Sema K1;Semaphorin-L;Sema L;CD antigen CD108)

Background

This gene encodes a member of the semaphorin family of proteins. The encoded preproprotein is proteolytically processed to generate the mature glycosylphosphatidylinositol (GPI)-anchored membrane glycoprotein. The encoded protein is found on activated lymphocytes and erythrocytes and may be involved in immunomodulatory and neuronal processes. The encoded protein carries the John Milton Hagen (JMH) blood group antigens. Mutations in this gene may be associated with reduced bone mineral density (BMD). Alternative splicing results in multiple transcript variants, at least one of which encodes an isoform that is proteolytically processed. [provided by RefSeq, Feb 2016],



Immunohistochemical analysis of paraffin-embedded human-brain, antibody was diluted at 1:200