

**CD16 rabbit pAb****Cat#: orb771550 (Manual)**

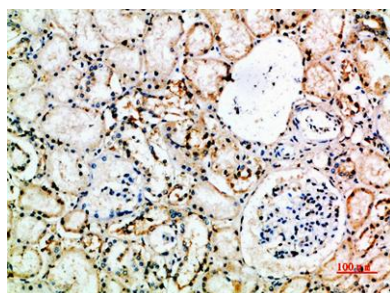
For research use only. Not intended for diagnostic use.

<b>Product Name</b>	CD16 rabbit pAb
<b>Host species</b>	Rabbit
<b>Applications</b>	IHC;IF;ELISA
<b>Species Cross-Reactivity</b>	Human;Rat;Mouse;
<b>Recommended dilutions</b>	IHC-p 1:50-200, ELISA 1:10000-20000
<b>Immunogen</b>	Synthetic peptide from human protein at AA range: 100-150
<b>Specificity</b>	The antibody detects endogenous CD16
<b>Formulation</b>	Liquid in PBS containing 50% glycerol, 0.5% BSA and 0.02% sodium azide..
<b>Storage</b>	Store at -20°C. Avoid repeated freeze-thaw cycles.
<b>Protein Name</b>	Low affinity immunoglobulin gamma Fc region receptor III-A/B (CD16a/b antigen) (Fc-gamma RIII-alpha/beta) (Fc-gamma RIII) (Fc-gamma RIIIa) (FcRIII) (FcRIIIa) (FcR-10) (IgG Fc receptor III-2) (CD antig
<b>Gene Name</b>	FCGR3A CD16A FCG3 FCGR3 IGFR3 FCGR3B CD16B FCG3 FCGR3 IGFR3
<b>Cellular localization</b>	Cell membrane ; Single-pass type I membrane protein . Secreted . Exists also as a soluble receptor. .
<b>Purification</b>	The antibody was affinity-purified from rabbit antiserum by affinity-chromatography using epitope-specific immunogen.

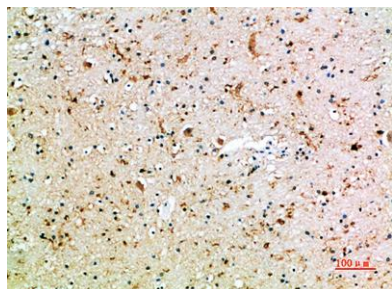
<b>Clonality</b>	Polyclonal
<b>Concentration</b>	1 mg/ml
<b>Observed band</b>	
<b>Human Gene ID</b>	2214
<b>Human Swiss-Prot Number</b>	P08637/O75015
<b>Alternative Names</b>	

### Background

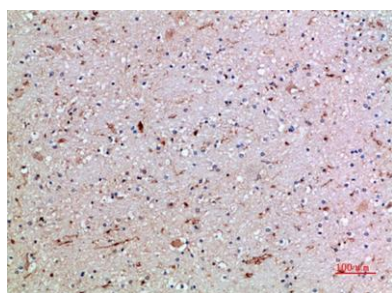
This gene encodes a receptor for the Fc portion of immunoglobulin G, and it is involved in the removal of antigen-antibody complexes from the circulation, as well as other other antibody-dependent responses. This gene (FCGR3A) is highly similar to another nearby gene (FCGR3B) located on chromosome 1. The receptor encoded by this gene is expressed on natural killer (NK) cells as an integral membrane glycoprotein anchored through a transmembrane peptide, whereas FCGR3B is expressed on polymorphonuclear neutrophils (PMN) where the receptor is anchored through a phosphatidylinositol (PI) linkage. Mutations in this gene have been linked to susceptibility to recurrent viral infections, susceptibility to systemic lupus erythematosus, and alloimmune neonatal neutropenia. Alternatively spliced transcript variants encoding different isoforms have been found for this gene. [provided by RefSeq,



**Immunohistochemical analysis of paraffin-embedded human-kidney, antibody was diluted at 1:200**



**Immunohistochemical analysis of paraffin-embedded human-brain, antibody was diluted at 1:200**



**Immunohistochemical analysis of paraffin-embedded human-brain, antibody was diluted at 1:200**