

CD168 rabbit pAb**Cat#: orb771536 (Manual)**

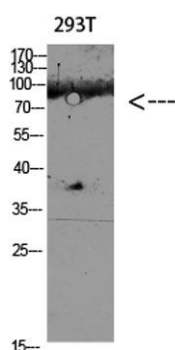
For research use only. Not intended for diagnostic use.

Product Name	CD168 rabbit pAb
Host species	Rabbit
Applications	WB;IHC;IF;ELISA
Species Cross-Reactivity	Human;Rat;Mouse;
Recommended dilutions	WB 1:500-2000,IHC-p 1:500-200, ELISA 1:10000-20000
Immunogen	Synthetic peptide from human protein at AA range: 280-340
Specificity	The antibody detects endogenous CD168
Formulation	Liquid in PBS containing 50% glycerol, 0.5% BSA and 0.02% sodium azide..
Storage	Store at -20°C. Avoid repeated freeze-thaw cycles.
Protein Name	Hyaluronan mediated motility receptor (Intracellular hyaluronic acid-binding protein) (Receptor for hyaluronan-mediated motility) (CD antigen CD168)
Gene Name	HMMR IHABP RHAMM
Cellular localization	Cell surface . Cytoplasm . Cytoplasm, cytoskeleton, spindle .
Purification	The antibody was affinity-purified from rabbit antiserum by affinity-chromatography using epitope-specific immunogen.
Clonality	Polyclonal

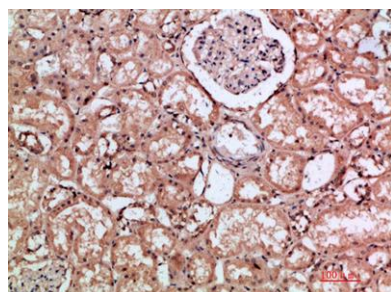
Concentration	1 mg/ml
Observed band	84kD
Human Gene ID	3161
Human Swiss-Prot Number	O75330
Alternative Names	Hyaluronan mediated motility receptor (Intracellular hyaluronic acid-binding protein;Receptor for hyaluronan-mediated motility;CD antigen CD168)

Background

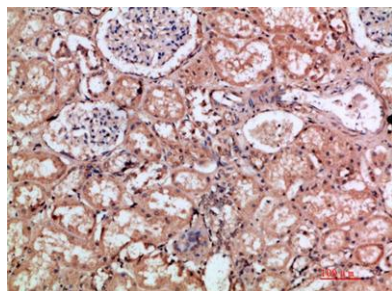
The protein encoded by this gene is involved in cell motility. It is expressed in breast tissue and together with other proteins, it forms a complex with BRCA1 and BRCA2, thus is potentially associated with higher risk of breast cancer. Alternatively spliced transcript variants encoding different isoforms have been noted for this gene. [provided by RefSeq, Dec 2008],



Western blot analysis of 293T lysate, antibody was diluted at 1000. Secondary antibody(catalog#:RS0002) was diluted at 1:20000



Immunohistochemical analysis of paraffin-embedded human-kidney, antibody was diluted at 1:200



Immunohistochemical analysis of paraffin-embedded human-kidney, antibody was diluted at 1:200