

## EGF rabbit pAb

**Cat#: orb771526 (Manual)**

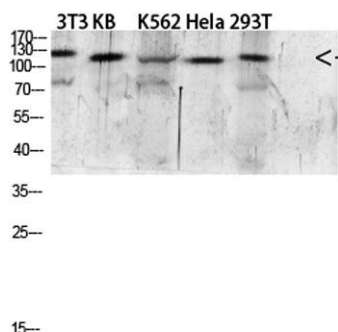
For research use only. Not intended for diagnostic use.

<b>Product Name</b>	EGF rabbit pAb
<b>Host species</b>	Rabbit
<b>Applications</b>	WB;IHC;IF;ELISA
<b>Species Cross-Reactivity</b>	Human;Rat;Mouse;
<b>Recommended dilutions</b>	WB 1:500-2000,IHC-p 1:500-200, ELISA 1:10000-20000
<b>Immunogen</b>	Synthetic peptide from human protein at AA range: 1000-1060
<b>Specificity</b>	The antibody detects endogenous EGF
<b>Formulation</b>	Liquid in PBS containing 50% glycerol, 0.5% BSA and 0.02% sodium azide..
<b>Storage</b>	Store at -20°C. Avoid repeated freeze-thaw cycles.
<b>Protein Name</b>	Pro-epidermal growth factor (EGF) [Cleaved into: Epidermal growth factor (Urogastrone)]
<b>Gene Name</b>	EGF
<b>Cellular localization</b>	Membrane; Single-pass type I membrane protein.
<b>Purification</b>	The antibody was affinity-purified from rabbit antiserum by affinity-chromatography using epitope-specific immunogen.
<b>Clonality</b>	Polyclonal

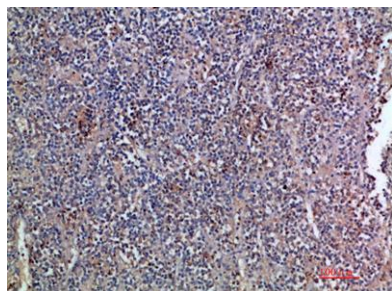
<b>Concentration</b>	1 mg/ml
<b>Observed band</b>	130kD
<b>Human Gene ID</b>	1950
<b>Human Swiss-Prot Number</b>	P01133
<b>Alternative Names</b>	Pro-epidermal growth factor (EGF) [Cleaved into: Epidermal growth factor (Urogastrone)]

### Background

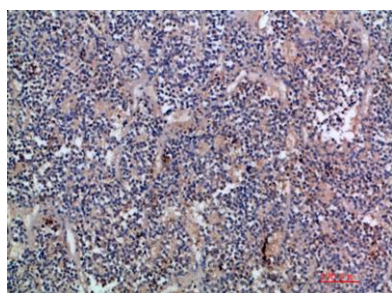
This gene encodes a member of the epidermal growth factor superfamily. The encoded preproprotein is proteolytically processed to generate the 53-amino acid epidermal growth factor peptide. This protein acts a potent mitogenic factor that plays an important role in the growth, proliferation and differentiation of numerous cell types. This protein acts by binding with high affinity to the cell surface receptor, epidermal growth factor receptor. Defects in this gene are the cause of hypomagnesemia type 4. Dysregulation of this gene has been associated with the growth and progression of certain cancers. Alternative splicing results in multiple transcript variants, at least one of which encodes a preproprotein that is proteolytically processed. [provided by RefSeq, Jan 2016],



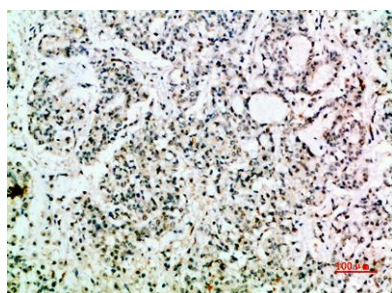
**Western blot analysis of 293T mouse-kidney lysate, antibody was diluted at 2000. Secondary antibody(catalog#:RS0002) was diluted at 1:20000**



**Immunohistochemical analysis of paraffin-embedded human-kidney-cancer, antibody was diluted at 1:200**



**Immunohistochemical analysis of paraffin-embedded human-kidney-cancer, antibody was diluted at 1:200**



**Immunohistochemical analysis of paraffin-embedded human-stomach-cancer, antibody was diluted at 1:200**