

**PENK rabbit pAb****Cat#: orb771422 (Manual)**

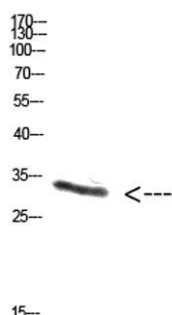
For research use only. Not intended for diagnostic use.

<b>Product Name</b>	PENK rabbit pAb
<b>Host species</b>	Rabbit
<b>Applications</b>	WB;IHC
<b>Species Cross-Reactivity</b>	Human;Rat;Mouse;
<b>Recommended dilutions</b>	WB 1:500-2000;IHC-p 1:50-300
<b>Immunogen</b>	Synthetic peptide from human protein at AA range: 51-100
<b>Specificity</b>	The antibody detects endogenous PENK protein
<b>Formulation</b>	Liquid in PBS containing 50% glycerol, 0.5% BSA and 0.02% sodium azide..
<b>Storage</b>	Store at -20°C. Avoid repeated freeze-thaw cycles.
<b>Protein Name</b>	proenkephalin
<b>Gene Name</b>	PENK
<b>Cellular localization</b>	Cytoplasmic vesicle, secretory vesicle, chromaffin granule lumen . Secreted .
<b>Purification</b>	The antibody was affinity-purified from rabbit antiserum by affinity-chromatography using epitope-specific immunogen.
<b>Clonality</b>	Polyclonal

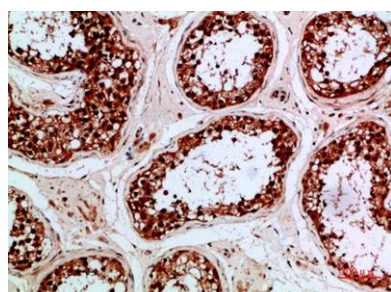
<b>Concentration</b>	1 mg/ml
<b>Observed band</b>	33kD
<b>Human Gene ID</b>	5179
<b>Human Swiss-Prot Number</b>	P01210
<b>Alternative Names</b>	PENK

### Background

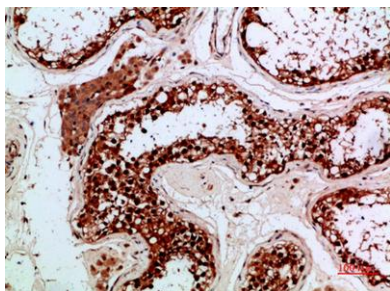
This gene encodes a preproprotein that is proteolytically processed to generate multiple protein products. These products include the pentapeptide opioids Met-enkephalin and Leu-enkephalin, which are stored in synaptic vesicles, then released into the synapse where they bind to mu- and delta-opioid receptors to modulate the perception of pain. Other non-opioid cleavage products may function in distinct biological activities. [provided by RefSeq, Jul 2015],



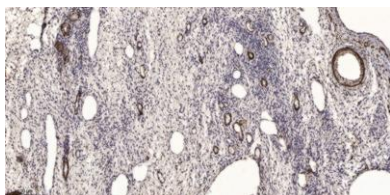
**Western Blot analysis of NT28 cells using Antibody diluted at 1000. Secondary antibody(catalog#:RS0002) was diluted at 1:20000**



**Immunohistochemical analysis of paraffin-embedded human-testis, antibody was diluted at 1:200**



**Immunohistochemical analysis of paraffin-embedded human-testis, antibody was diluted at 1:200**



**Immunohistochemical analysis of paraffin-embedded human oophoroma. 1, Antibody was diluted at 1:200(4° overnight). 2, Tris-EDTA,pH9.0 was used for antigen retrieval. 3,Secondary antibody was diluted at 1:200(room temperature, 45min).**