

FBXO7 rabbit pAb**Cat#: orb771418 (Manual)**

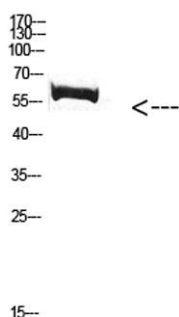
For research use only. Not intended for diagnostic use.

Product Name	FBXO7 rabbit pAb
Host species	Rabbit
Applications	WB;ELISA
Species Cross-Reactivity	Human;Rat;Mouse;
Recommended dilutions	WB 1:500-2000, ELISA 1:10000-20000
Immunogen	Synthetic peptide from human protein at AA range: 371-420
Specificity	The antibody detects endogenous FBXO7 protein
Formulation	Liquid in PBS containing 50% glycerol, 0.5% BSA and 0.02% sodium azide..
Storage	Store at -20°C. Avoid repeated freeze-thaw cycles.
Protein Name	F-box protein 7
Gene Name	FBXO7 FBX7
Cellular localization	Cytoplasm . Nucleus . Mitochondrion . Cytoplasm, cytosol . Predominantly cytoplasmic (PubMed:16096642). A minor proportion is detected in the nucleus (PubMed:16096642). Relocates from the cytosol to depolarized mitochondria (PubMed:23933751). .
Purification	The antibody was affinity-purified from rabbit antiserum by affinity-chromatography using epitope-specific immunogen.

Clonality	Polyclonal
Concentration	1 mg/ml
Observed band	58kD
Human Gene ID	25793
Human Swiss-Prot Number	Q9Y3I1
Alternative Names	FBXO7 FBX7

Background

This gene encodes a member of the F-box protein family which is characterized by an approximately 40 amino acid motif, the F-box. The F-box proteins constitute one of the four subunits of the ubiquitin protein ligase complex called SCFs (SKP1-cullin-F-box), which function in phosphorylation-dependent ubiquitination. The F-box proteins are divided into 3 classes: Fbws containing WD-40 domains, Fbls containing leucine-rich repeats, and Fbxs containing either different protein-protein interaction modules or no recognizable motifs. The protein encoded by this gene belongs to the Fbxs class and it may play a role in regulation of hematopoiesis. Alternatively spliced transcript variants of this gene have been identified with the full-length natures of only some variants being determined. [provided by RefSeq, Jul 2008],



Western Blot analysis of mouse-kidney cells using Antibody diluted at 1000. Secondary antibody(catalog#:RS0002) was diluted at 1:20000