

## C8 $\beta$ rabbit pAb

**Cat#: orb771393 (Manual)**

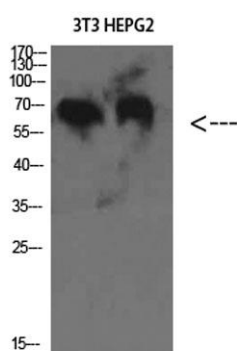
For research use only. Not intended for diagnostic use.

<b>Product Name</b>	C8 $\beta$ rabbit pAb
<b>Host species</b>	Rabbit
<b>Applications</b>	WB;ELISA
<b>Species Cross-Reactivity</b>	Human;Rat
<b>Recommended dilutions</b>	WB 1:500-2000, ELISA 1:10000-20000
<b>Immunogen</b>	The antiserum was produced against synthesized peptide derived from the Internal region of human C8B. AA range:371-420
<b>Specificity</b>	C8 $\beta$ Polyclonal Antibody detects endogenous levels of C8 $\beta$
<b>Formulation</b>	Liquid in PBS containing 50% glycerol, 0.5% BSA and 0.02% sodium azide..
<b>Storage</b>	Store at -20°C. Avoid repeated freeze-thaw cycles.
<b>Protein Name</b>	C8 $\beta$
<b>Gene Name</b>	C8B
<b>Cellular localization</b>	Secreted.
<b>Purification</b>	The antibody was affinity-purified from rabbit antiserum by affinity-chromatography using epitope-specific immunogen.
<b>Clonality</b>	Polyclonal

<b>Concentration</b>	1 mg/ml
<b>Observed band</b>	70kD
<b>Human Gene ID</b>	732
<b>Human Swiss-Prot Number</b>	P07358
<b>Alternative Names</b>	Complement component C8 beta chain (Complement component 8 subunit beta)

### Background

This gene encodes one of the three subunits of the complement component 8 (C8) protein. C8 is composed of equimolar amounts of alpha, beta and gamma subunits, which are encoded by three separate genes. C8 is one component of the membrane attack complex, which mediates cell lysis, and it initiates membrane penetration of the complex. This protein mediates the interaction of C8 with the C5b-7 membrane attack complex precursor. In humans deficiency of this protein is associated with increased risk of meningococcal infections. Alternative splicing results in multiple transcript variants. [provided by RefSeq, Jun 2013],



**Western Blot analysis of 3T3 HEPG2 cells using C8  $\beta$  Polyclonal Antibody diluted at 1:2000. Secondary antibody(catalog#:RS0002) was diluted at 1:20000**