

VPS35 rabbit pAb**Cat#: orb771380 (Manual)**

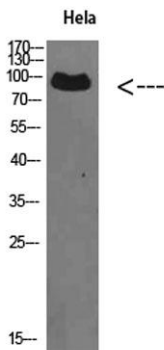
For research use only. Not intended for diagnostic use.

| | |
|---------------------------------|--|
| Product Name | VPS35 rabbit pAb |
| Host species | Rabbit |
| Applications | WB;ELISA |
| Species Cross-Reactivity | Human;Mouse;Rat |
| Recommended dilutions | WB 1:500-2000, ELISA 1:10000-20000 |
| Immunogen | Synthesized peptide derived from VPS35 at AA range: 511-560 |
| Specificity | VPS35 Polyclonal Antibody detects endogenous levels of VPS35 |
| Formulation | Liquid in PBS containing 50% glycerol, 0.5% BSA and 0.02% sodium azide.. |
| Storage | Store at -20°C. Avoid repeated freeze-thaw cycles. |
| Protein Name | VPS35 |
| Gene Name | VPS35 |
| Cellular localization | Cytoplasm. Membrane; Peripheral membrane protein. Endosome . Early endosome . Late endosome . Localizes to tubular profiles adjacent to endosomes. . |
| Purification | The antibody was affinity-purified from rabbit antiserum by affinity-chromatography using epitope-specific immunogen. |

| | |
|--------------------------------|---|
| Clonality | Polyclonal |
| Concentration | 1 mg/ml |
| Observed band | 92kD |
| Human Gene ID | 55737 |
| Human Swiss-Prot Number | Q96QK1 |
| Alternative Names | Vacuolar protein sorting-associated protein 35 (hVPS35) (Maternal-embryonic 3) (Vesicle protein sorting 35) |

Background

This gene belongs to a group of vacuolar protein sorting (VPS) genes. The encoded protein is a component of a large multimeric complex, termed the retromer complex, involved in retrograde transport of proteins from endosomes to the trans-Golgi network. The close structural similarity between the yeast and human proteins that make up this complex suggests a similarity in function. Expression studies in yeast and mammalian cells indicate that this protein interacts directly with VPS35, which serves as the core of the retromer complex. [provided by RefSeq, Jul 2008],



Western Blot analysis of HeLa cells using VPS35 Polyclonal Antibody diluted at 1:500. Secondary antibody(catalog#:RS0002) was diluted at 1:20000