

Collagen alpha-1(XXVIII)rabbit pAb**Cat#: orb771377 (Manual)**

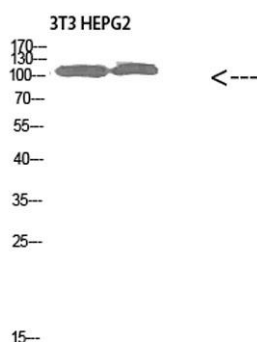
For research use only. Not intended for diagnostic use.

Product Name	Collagen alpha-1(XXVIII)rabbit pAb
Host species	Rabbit
Applications	WB;ELISA
Species Cross-Reactivity	Human;Mouse
Recommended dilutions	WB 1:500-2000, ELISA 1:10000-20000
Immunogen	The antiserum was produced against synthesized peptide derived from the N-terminal region of human COL28A1. AA range:111-160
Specificity	Collagen alpha-1(XXVIII)Polyclonal Antibody detects endogenous levels of Collagen alpha-1(XXVIII)Polyclonal Antibody
Formulation	Liquid in PBS containing 50% glycerol, 0.5% BSA and 0.02% sodium azide..
Storage	Store at -20°C. Avoid repeated freeze-thaw cycles.
Protein Name	Collagen alpha-1(XXVIII)Polyclonal Antibody
Gene Name	COL28A1
Cellular localization	Secreted, extracellular space, extracellular matrix, basement membrane .
Purification	The antibody was affinity-purified from rabbit antiserum by affinity-chromatography using epitope-specific immunogen.
Clonality	Polyclonal

Concentration	1 mg/ml
Observed band	116kD
Human Gene ID	340267
Human Swiss-Prot Number	Q2UY09
Alternative Names	Collagen alpha-1(XXVIII) chain

Background

COL28A1 belongs to a class of collagens containing von Willebrand factor (VWF; MIM 613160) type A (VWFA) domains (Veit et al., 2006 [PubMed 16330543]).[supplied by OMIM, Nov 2010],



Western Blot analysis of 3T3 HEPG2 cells using Collagen alpha-1(XXVIII) Polyclonal Antibody diluted at 1:1000. Secondary antibody (catalog#: RS0002) was diluted at 1:20000