

PI 3 Kinase Class 3 rabbit pAb**Cat#: orb771352 (Manual)**

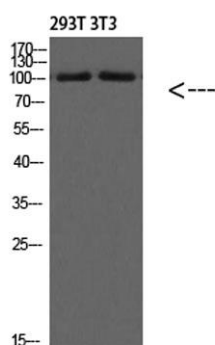
For research use only. Not intended for diagnostic use.

Product Name	PI 3 Kinase Class 3 rabbit pAb
Host species	Rabbit
Applications	WB;IHC
Species Cross-Reactivity	Human;Mouse;Rat;Predicted:Cow:PIG
Recommended dilutions	WB 1:500-2000;IHC-p 1:50-300
Immunogen	Synthetic Peptide of PI 3 Kinase Class 3
Specificity	This antibody detects endogenous levels of PI 3 Kinase Class 3 Polyclonal Antibody at Human;Mouse;Rat;Predicted:Cow:PIG
Formulation	Liquid in PBS containing 50% glycerol, 0.5% BSA and 0.02% sodium azide..
Storage	Store at -20°C. Avoid repeated freeze-thaw cycles.
Protein Name	PI 3 Kinase Class 3
Gene Name	PIK3C3 VPS34
Cellular localization	Midbody . Late endosome . Cytoplasmic vesicle, autophagosome . As component of the PI3K complex I localized to pre-autophagosome structures. As component of the PI3K complex II localized predominantly to endosomes (PubMed:14617358). Localizes also to disc
Purification	The antibody was affinity-purified from rabbit antiserum by affinity-chromatography using epitope-specific immunogen.

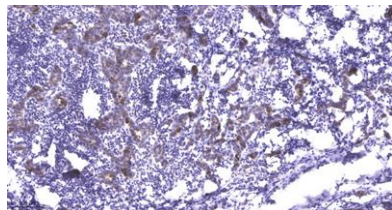
Clonality	Polyclonal
Concentration	1 mg/ml
Observed band	100kD
Human Gene ID	5289
Human Swiss-Prot Number	Q8NEB9
Alternative Names	phosphoinositide-3-kinase, class 3

Background

catalytic activity:ATP + 1-phosphatidyl-1D-myo-inositol = ADP + 1-phosphatidyl-1D-myo-inositol 3-phosphate.,cofactor:Manganese.,function:Catalytic subunit of the PI3K complex. Involved in the transport of lysosomal enzyme precursors to lysosomes.,similarity:Belongs to the PI3/PI4-kinase family.,similarity:Contains 1 PI3K/PI4K domain.,subunit:Probably forms a complex with AMBRA1 and BECN1 (By similarity). Heterodimer. This subunit, part of a complex composed of regulatory and catalytic subunits, associates with regulatory subunit PIK3R4.,tissue specificity:Ubiquitously expressed, with a highest expression in skeletal muscle.,



Western Blot analysis of 293T 3T3 cells using PI 3 Kinase Class 3 Polyclonal Antibody diluted at 1:1500. Secondary antibody(catalog#:RS0002) was diluted at 1:20000



Immunohistochemical analysis of paraffin-embedded human Breast cancer. 1, Antibody was diluted at 1:200(4° overnight). 2, Tris-EDTA,pH9.0 was used for antigen retrieval. 3,Secondary antibody was diluted at 1:200(room temperature, 45min).