

## Calretinin rabbit pAb

**Cat#: orb771318 (Manual)**

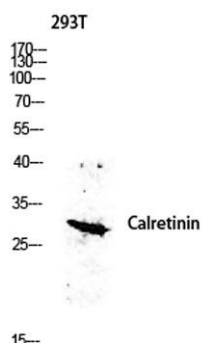
For research use only. Not intended for diagnostic use.

<b>Product Name</b>	Calretinin rabbit pAb
<b>Host species</b>	Rabbit
<b>Applications</b>	WB;IHC;IF;ELISA
<b>Species Cross-Reactivity</b>	Human;Mouse;Rat
<b>Recommended dilutions</b>	Western Blot: 1/500 - 1/2000. ELISA: 1/10000. Not yet tested in other applications.
<b>Immunogen</b>	Synthesized peptide derived from calbindin 2 at AA range: 191-240
<b>Specificity</b>	Calretinin Polyclonal Antibody detects endogenous levels of calbindin 2
<b>Formulation</b>	Liquid in PBS containing 50% glycerol, 0.5% BSA and 0.02% sodium azide..
<b>Storage</b>	Store at -20°C. Avoid repeated freeze-thaw cycles.
<b>Protein Name</b>	calbindin 2
<b>Gene Name</b>	CALB2
<b>Cellular localization</b>	nucleus,cytoplasm,cytosol,gap junction,neuron projection,terminal bouton,synapse,
<b>Purification</b>	The antibody was affinity-purified from rabbit antiserum by affinity-chromatography using epitope-specific immunogen.
<b>Clonality</b>	Polyclonal

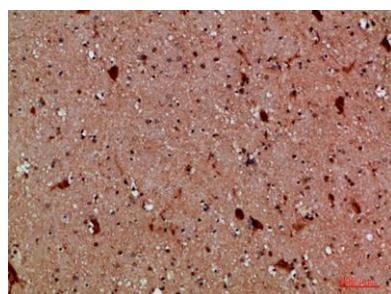
<b>Concentration</b>	1 mg/ml
<b>Observed band</b>	32kD
<b>Human Gene ID</b>	794
<b>Human Swiss-Prot Number</b>	P22676
<b>Alternative Names</b>	Calretinin (CR;29 kDa calbindin)

### Background

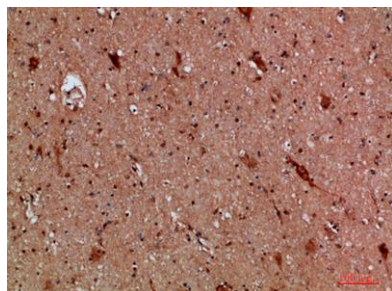
This gene encodes an intracellular calcium-binding protein belonging to the troponin C superfamily. Members of this protein family have six EF-hand domains which bind calcium. This protein plays a role in diverse cellular functions, including message targeting and intracellular calcium buffering. It also functions as a modulator of neuronal excitability, and is a diagnostic marker for some human diseases, including Hirschsprung disease and some cancers. Alternative splicing results in multiple transcript variants. [provided by RefSeq, Jun 2010],



**Western blot analysis of 293T lysis using CALB2 antibody. Antibody was diluted at 1:500. Secondary antibody(catalog#:RS0002) was diluted at 1:20000**



**Immunohistochemical analysis of paraffin-embedded human-brain, antibody was diluted at 1:200**



**Immunohistochemical analysis of paraffin-embedded human-brain, antibody was diluted at 1:200**