

**SSTR2 rabbit pAb****Cat#: orb771317 (Manual)**

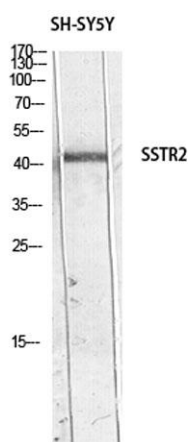
For research use only. Not intended for diagnostic use.

<b>Product Name</b>	SSTR2 rabbit pAb
<b>Host species</b>	Rabbit
<b>Applications</b>	WB;ELISA
<b>Species Cross-Reactivity</b>	Human;Mouse;Rat
<b>Recommended dilutions</b>	Western Blot: 1/500 - 1/2000. ELISA: 1/10000. Not yet tested in other applications.
<b>Immunogen</b>	The antiserum was produced against synthesized peptide derived from the Internal region of human SSTR2. AA range:220-270
<b>Specificity</b>	SSTR2 Polyclonal Antibody detects endogenous levels of somatostatin receptor 2
<b>Formulation</b>	Liquid in PBS containing 50% glycerol, 0.5% BSA and 0.02% sodium azide..
<b>Storage</b>	Store at -20°C. Avoid repeated freeze-thaw cycles.
<b>Protein Name</b>	somatostatin receptor 2
<b>Gene Name</b>	SSTR2
<b>Cellular localization</b>	Cell membrane; Multi-pass membrane protein. Cytoplasm. Located mainly at the cell surface under basal conditions. Agonist stimulation results in internalization to the cytoplasm.
<b>Purification</b>	The antibody was affinity-purified from rabbit antiserum by affinity-chromatography using epitope-specific immunogen.

<b>Clonality</b>	Polyclonal
<b>Concentration</b>	1 mg/ml
<b>Observed band</b>	40kD
<b>Human Gene ID</b>	6752
<b>Human Swiss-Prot Number</b>	P30874
<b>Alternative Names</b>	Somatostatin receptor type 2 (SS-2-R) (SS2-R) (SS2R) (SRIF-1)

### Background

Somatostatin acts at many sites to inhibit the release of many hormones and other secretory proteins. The biologic effects of somatostatin are probably mediated by a family of G protein-coupled receptors that are expressed in a tissue-specific manner. SSTR2 is a member of the superfamily of receptors having seven transmembrane segments and is expressed in highest levels in cerebrum and kidney. [provided by RefSeq, Jul 2008],



**Western blot analysis of SH-SY5Y lysis using SSTR2 antibody. Antibody was diluted at 1:500. Secondary antibody(catalog#:RS0002) was diluted at 1:20000**