

RIP140 (Acetyl Lys158) rabbit pAb**Cat#: orb771309 (Manual)**

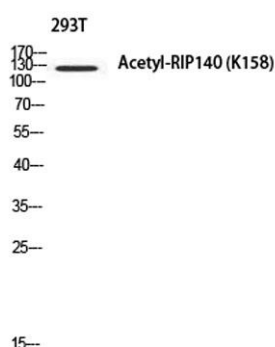
For research use only. Not intended for diagnostic use.

Product Name	RIP140 (Acetyl Lys158) rabbit pAb
Host species	Rabbit
Applications	WB;ELISA;IHC
Species Cross-Reactivity	Human;Mouse;Rat
Recommended dilutions	WB 1:500-2000;IHC-p 1:50-300; ELISA 2000-20000
Immunogen	Synthesized acetyl-peptide derived from human RIP140 around the acetylation site of K158.
Specificity	Acetyl-RIP140 (K158) Polyclonal Antibody detects endogenous levels of RIP140 around the acetylation site of K158 protein.
Formulation	Liquid in PBS containing 50% glycerol, 0.5% BSA and 0.02% sodium azide..
Storage	Store at -20°C. Avoid repeated freeze-thaw cycles.
Protein Name	Nuclear receptor-interacting protein 1
Gene Name	NRIP1
Cellular localization	Nucleus . Localized to discrete foci and redistributes to larger nuclear domains upon binding to ligand-bound NR3C1.
Purification	The antibody was affinity-purified from rabbit antiserum by affinity-chromatography using epitope-specific immunogen.
Clonality	Polyclonal

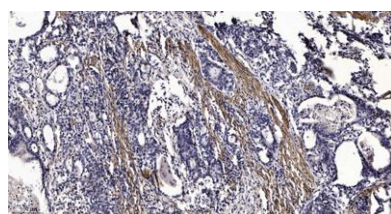
Concentration	1 mg/ml
Observed band	
Human Gene ID	8204
Human Swiss-Prot Number	P48552
Alternative Names	NRIP1; Nuclear receptor-interacting protein 1; Nuclear factor RIP140; Receptor-interacting protein 140

Background

Nuclear receptor interacting protein 1 (NRIP1) is a nuclear protein that specifically interacts with the hormone-dependent activation domain AF2 of nuclear receptors. Also known as RIP140, this protein modulates transcriptional activity of the estrogen receptor. [provided by RefSeq, Jul 2008],



Western blot analysis of 293T using Acetyl-RIP140 (K158) antibody. Antibody was diluted at 1:500. Secondary antibody(catalog#:RS0002) was diluted at 1:20000



Immunohistochemical analysis of paraffin-embedded human Gastric adenocarcinoma. 1, Antibody was diluted at 1:200(4° overnight). 2, Tris-EDTA,pH9.0 was used for antigen retrieval. 3,Secondary antibody was diluted at 1:200(room temperature, 45min).