

**CMTM8 rabbit pAb****Cat#: orb771299 (Manual)**

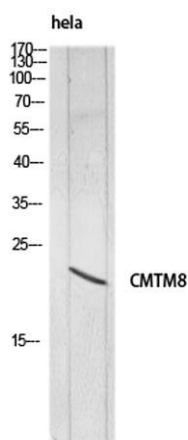
For research use only. Not intended for diagnostic use.

<b>Product Name</b>	CMTM8 rabbit pAb
<b>Host species</b>	Rabbit
<b>Applications</b>	WB;IHC;IF;ELISA
<b>Species Cross-Reactivity</b>	Human;Rat;Mouse;
<b>Recommended dilutions</b>	Western Blot: 1/500 - 1/2000. IHC-p: 1:100-1:300. ELISA: 1/10000. Not yet tested in other applications.
<b>Immunogen</b>	The antiserum was produced against synthesized peptide derived from the Internal region of human CMTM8. AA range:101-150
<b>Specificity</b>	CMTM8 Polyclonal Antibody detects endogenous levels of CMTM8 protein.
<b>Formulation</b>	Liquid in PBS containing 50% glycerol, 0.5% BSA and 0.02% sodium azide..
<b>Storage</b>	Store at -20°C. Avoid repeated freeze-thaw cycles.
<b>Protein Name</b>	CKLF-like MARVEL transmembrane domain-containing protein 8
<b>Gene Name</b>	CMTM8
<b>Cellular localization</b>	[Isoform 1]: Membrane; Multi-pass membrane protein.; [Isoform 2]: Cytoplasm. Nucleus.
<b>Purification</b>	The antibody was affinity-purified from rabbit antiserum by affinity-chromatography using epitope-specific immunogen.
<b>Clonality</b>	Polyclonal

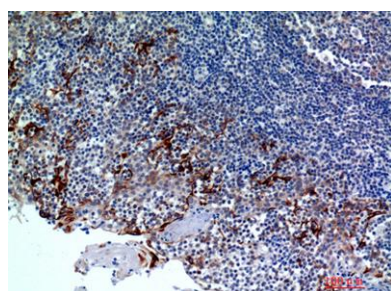
<b>Concentration</b>	1 mg/ml
<b>Observed band</b>	20kD
<b>Human Gene ID</b>	152189
<b>Human Swiss-Prot Number</b>	Q8IZV2
<b>Alternative Names</b>	CMTM8; CKLFSF8; CKLF-like MARVEL transmembrane domain-containing protein 8; Chemokine-like factor superfamily member 8

### Background

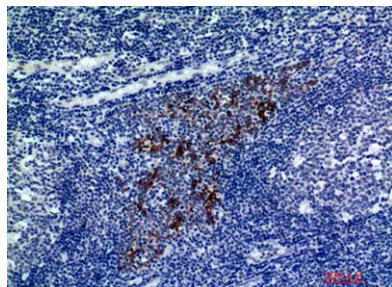
This gene belongs to the chemokine-like factor gene superfamily, a novel family that is similar to the chemokine and the transmembrane 4 superfamilies. This gene is one of several chemokine-like factor genes located in a cluster on chromosome 3. This gene acts as a tumor suppressor, and plays a role in regulating the migration of tumor cells. The encoded protein is thought to function as a negative regulator of epidermal growth factor-induced signaling. Alternative splicing results in multiple transcript variants encoding different isoforms. [provided by RefSeq, Feb 2016],



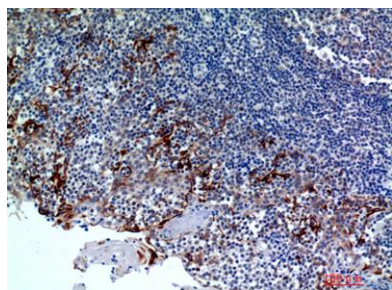
**Western blot analysis of HeLa lysis using CMTM8 antibody. Secondary antibody(catalog#:RS0002) was diluted at 1:20000**



**Immunohistochemical analysis of paraffin-embedded human tonsils, antibody was diluted at 1:200**



**Immunohistochemical analysis of paraffin-embedded human-tonsils, antibody was diluted at 1:200**



**Immunohistochemical analysis of paraffin-embedded human-tonsils2, antibody was diluted at 1:100**