

CD249 rabbit pAb**Cat#: orb771288 (Manual)**

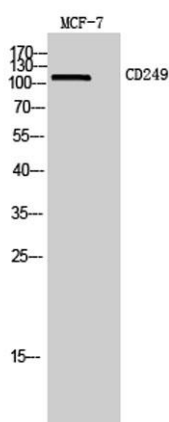
For research use only. Not intended for diagnostic use.

Product Name	CD249 rabbit pAb
Host species	Rabbit
Applications	WB;IHC;IF;ELISA
Species Cross-Reactivity	Human;Mouse;Rat
Recommended dilutions	Western Blot: 1/500 - 1/2000. IHC-p: 1:100-1:300. ELISA: 1/10000. Not yet tested in other applications.
Immunogen	The antiserum was produced against synthesized peptide derived from the Internal region of human ENPEP. AA range:671-720
Specificity	CD249 Polyclonal Antibody detects endogenous levels of CD249 protein.
Formulation	Liquid in PBS containing 50% glycerol, 0.5% BSA and 0.02% sodium azide..
Storage	Store at -20°C. Avoid repeated freeze-thaw cycles.
Protein Name	Glutamyl aminopeptidase
Gene Name	ENPEP
Cellular localization	Cell membrane ; Single-pass type II membrane protein.
Purification	The antibody was affinity-purified from rabbit antiserum by affinity-chromatography using epitope-specific immunogen.
Clonality	Polyclonal

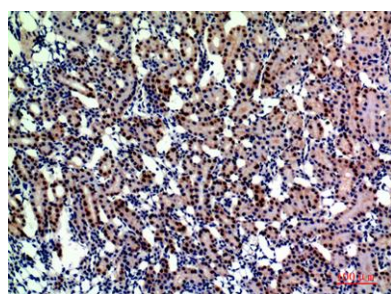
Concentration	1 mg/ml
Observed band	110kD
Human Gene ID	2028
Human Swiss-Prot Number	Q07075
Alternative Names	ENPEP; Glutamyl aminopeptidase; EAP; Aminopeptidase A; AP-A; Differentiation antigen gp160; CD249

Background

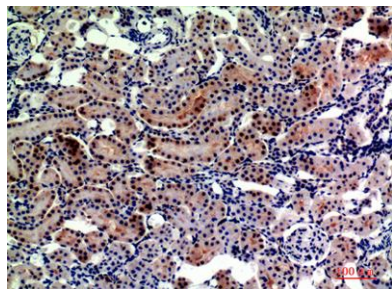
catalytic activity:Release of N-terminal glutamate (and to a lesser extent aspartate) from a peptide.,cofactor:Binds 1 zinc ion per subunit.,function:Appears to have a role in the catabolic pathway of the renin-angiotensin system. Probably plays a role in regulating growth and differentiation of early B-lineage cells.,similarity:Belongs to the peptidase M1 family.,subunit:Homodimer; disulfide-linked.,tissue specificity:Expressed by epithelial cells of the proximal tubule cells and the glomerulus of the nephron. Also found in a variety of other tissues.,



Western Blot analysis of MCF7 cells using CD249 Polyclonal Antibody. Secondary antibody(catalog#:RS0002) was diluted at 1:20000



Immunohistochemical analysis of paraffin-embedded rat-kidney, antibody was diluted at 1:200



Immunohistochemical analysis of paraffin-embedded rat-kidney, antibody was diluted at 1:200