

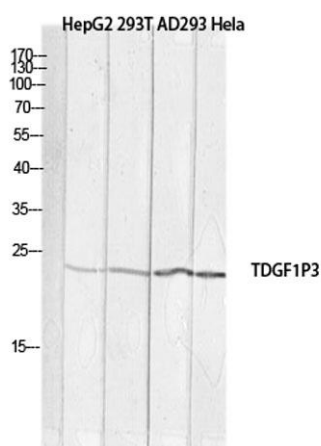
Cripto-3 rabbit pAb

Cat#: orb771275 (Manual)

For research use only. Not intended for diagnostic use.

Product Name	Cripto-3 rabbit pAb
Host species	Rabbit
Applications	WB;ELISA
Species Cross-Reactivity	Human;Rat;Mouse;
Recommended dilutions	Western Blot: 1/500 - 1/2000. ELISA: 1/10000. Not yet tested in other applications.
Immunogen	The antiserum was produced against synthesized peptide derived from the Internal region of human TDGF1P3. AA range:1-50
Specificity	Cripto-3 Polyclonal Antibody detects endogenous levels of Cripto-3 protein.
Formulation	Liquid in PBS containing 50% glycerol, 0.5% BSA and 0.02% sodium azide..
Storage	Store at -20°C. Avoid repeated freeze-thaw cycles.
Protein Name	Putative teratocarcinoma-derived growth factor 3
Gene Name	TDGF1P3
Cellular localization	Cell membrane .
Purification	The antibody was affinity-purified from rabbit antiserum by affinity-chromatography using epitope-specific immunogen.
Clonality	Polyclonal

Concentration	1 mg/ml
Observed band	21kD
Human Gene ID	
Human Swiss-Prot Number	P51864
Alternative Names	TDGF1P3; CRIPTO3; TDGF2; TDGF3; Putative teratocarcinoma-derived growth factor 3; Cripto-3 growth factor; Epidermal growth factor-like cripto protein CR3; Teratocarcinoma-derived growth factor 1 pseudogene 3
Background	The TDGF3 locus has characteristics of a retrotransposon, including lack of introns and a poly(A) sequence. [provided by RefSeq, Jul 2008],



Western blot analysis of HepG2 293T AD293 HeLa lysis using TDGF1P3 antibody. Antibody was diluted at 1:1000. Secondary antibody(catalog#:RS0002) was diluted at 1:20000