

IL-1F5 rabbit pAb**Cat#: orb771274 (Manual)**

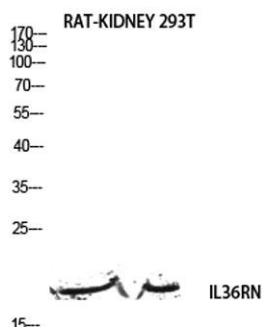
For research use only. Not intended for diagnostic use.

| | |
|---------------------------------|--|
| Product Name | IL-1F5 rabbit pAb |
| Host species | Rabbit |
| Applications | WB;ELISA |
| Species Cross-Reactivity | Human;Mouse;Rat |
| Recommended dilutions | Western Blot: 1/500 - 1/2000. ELISA: 1/10000. Not yet tested in other applications. |
| Immunogen | The antiserum was produced against synthesized peptide derived from the Internal region of human IL36RN. AA range:1-50 |
| Specificity | IL-1F5 Polyclonal Antibody detects endogenous levels of IL-1F5 protein. |
| Formulation | Liquid in PBS containing 50% glycerol, 0.5% BSA and 0.02% sodium azide.. |
| Storage | Store at -20°C. Avoid repeated freeze-thaw cycles. |
| Protein Name | Interleukin-36 receptor antagonist protein |
| Gene Name | IL36RN |
| Cellular localization | Cytoplasm . Secreted . The secretion is dependent on protein unfolding and facilitated by the cargo receptor TMED10; it results in protein translocation from the cytoplasm into the ERGIC (endoplasmic reticulum-Golgi intermediate compartment) followed by vesicle entry and secretion. . |
| Purification | The antibody was affinity-purified from rabbit antiserum by affinity-chromatography using epitope-specific immunogen. |

| | |
|--------------------------------|---|
| Clonality | Polyclonal |
| Concentration | 1 mg/ml |
| Observed band | 17kD |
| Human Gene ID | 26525 |
| Human Swiss-Prot Number | Q9UBH0 |
| Alternative Names | IL36RN; FIL1D; IL1F5; IL1HY1; IL1L1; IL1RP3; Interleukin-36 receptor antagonist protein; FIL1 delta; IL-1-related protein 3; IL-1RP3; Interleukin-1 HY1; IL-1HY1; Interleukin-1 delta; IL-1 delta; Interleukin-1 family member 5; IL-1F5; Interleukin-1 recepto |

Background

The protein encoded by this gene is a member of the interleukin 1 cytokine family. This cytokine was shown to specifically inhibit the activation of NF-kappaB induced by interleukin 1 family, member 6 (IL1F6). This gene and eight other interleukin 1 family genes form a cytokine gene cluster on chromosome 2. Two alternatively spliced transcript variants encoding the same protein have been reported. [provided by RefSeq, Jul 2008],



Western blot analysis of RAT-KIDNEY 293T lysis using IL36RN antibody. Antibody was diluted at 1:500. Secondary antibody(catalog#:RS0002) was diluted at 1:20000