

CD107b rabbit pAb**Cat#: orb771265 (Manual)**

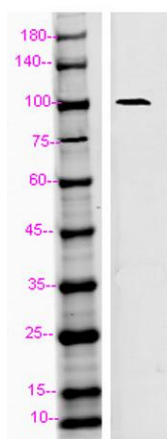
For research use only. Not intended for diagnostic use.

Product Name	CD107b rabbit pAb
Host species	Rabbit
Applications	WB;IHC;IF;ELISA
Species Cross-Reactivity	Human;Rat;Mouse;
Recommended dilutions	Western Blot: 1/500 - 1/2000. IHC-p: 1:100-1:300. ELISA: 1/10000. Not yet tested in other applications.
Immunogen	The antiserum was produced against synthesized peptide derived from the Internal region of human LAMP2. AA range:121-170
Specificity	CD107b Polyclonal Antibody detects endogenous levels of CD107b protein.
Formulation	Liquid in PBS containing 50% glycerol, 0.5% BSA and 0.02% sodium azide..
Storage	Store at -20°C. Avoid repeated freeze-thaw cycles.
Protein Name	Lysosome-associated membrane glycoprotein 2
Gene Name	LAMP2
Cellular localization	Cell membrane ; Single-pass type I membrane protein . Endosome membrane ; Single-pass type I membrane protein . Lysosome membrane ; Single-pass type I membrane protein . Cytoplasmic vesicle, autophagosome membrane . This protein shuttles between lysosomes
Purification	The antibody was affinity-purified from rabbit antiserum by affinity-chromatography using epitope-specific immunogen.

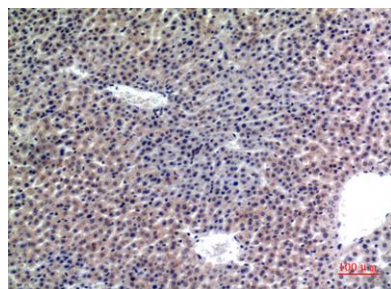
Clonality	Polyclonal
Concentration	1 mg/ml
Observed band	100kD
Human Gene ID	3920
Human Swiss-Prot Number	P13473
Alternative Names	LAMP2; Lysosome-associated membrane glycoprotein 2; LAMP-2; Lysosome-associated membrane protein 2; CD107 antigen-like family member B; CD107b

Background

The protein encoded by this gene is a member of a family of membrane glycoproteins. This glycoprotein provides selectins with carbohydrate ligands. It may play a role in tumor cell metastasis. It may also function in the protection, maintenance, and adhesion of the lysosome. Alternative splicing of this gene results in multiple transcript variants encoding distinct proteins. [provided by RefSeq, Jul 2008],



Western blot analysis of 293T using LAMP2 antibody. Antibody was diluted at 1:1000. Secondary antibody(catalog#:RS0002) was diluted at 1:20000



Immunohistochemical analysis of paraffin-embedded mouse-liver, antibody was diluted at 1:100



Explore. Bioreagents.

www.biorbyt.com