

Dectin-2 rabbit pAb

Cat#: orb771242 (Manual)

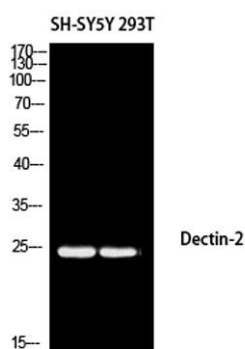
For research use only. Not intended for diagnostic use.

| | |
|---------------------------------|---|
| Product Name | Dectin-2 rabbit pAb |
| Host species | Rabbit |
| Applications | WB;IHC;IF;ELISA |
| Species Cross-Reactivity | Human;Rat;Mouse; |
| Recommended dilutions | Western Blot: 1/500 - 1/2000. IHC-p: 1:100-1:300. ELISA: 1/10000. Not yet tested in other applications. |
| Immunogen | Synthesized peptide derived from the Internal region of human Dectin-2. |
| Specificity | Dectin-2 Polyclonal Antibody detects endogenous levels of Dectin-2 protein. |
| Formulation | Liquid in PBS containing 50% glycerol, 0.5% BSA and 0.02% sodium azide.. |
| Storage | Store at -20°C. Avoid repeated freeze-thaw cycles. |
| Protein Name | C-type lectin domain family 6 member A |
| Gene Name | CLEC6A |
| Cellular localization | Cell membrane ; Single-pass type II membrane protein . |
| Purification | The antibody was affinity-purified from rabbit antiserum by affinity-chromatography using epitope-specific immunogen. |
| Clonality | Polyclonal |

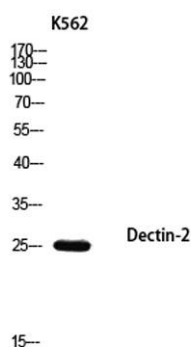
| | |
|--------------------------------|--|
| Concentration | 1 mg/ml |
| Observed band | 23kD |
| Human Gene ID | 93978 |
| Human Swiss-Prot Number | Q6EIG7 |
| Alternative Names | CLEC6A; CLECSF10; DECTIN2; C-type lectin domain family 6 member A; C-type lectin superfamily member 10; Dendritic cell-associated C-type lectin 2; DC-associated C-type lectin 2; Dectin-2 |

Background

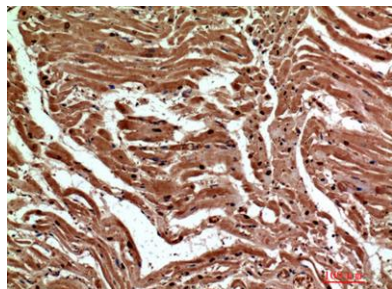
The protein encoded by this gene is a type II membrane receptor with an extracellular C-type lectin-like domain fold. The extracellular portion binds structures with a high mannose content and has been shown to recognize several pathogens, including *C. elegans*, *S. cerevisiae*, *M. tuberculosis*, *C. neoformans*, and house dust mite. When stimulated, the encoded protein initiates signalling through the CARD9-Bcl10-Malt1 pathway, leading to the induction of cytokines. Two transcript variants encoding different isoforms have been found for this gene. [provided by RefSeq, Dec 2015],



Western blot analysis of SH-SY5Y 293T using Dectin-2 antibody. Antibody was diluted at 1:1000. Secondary antibody(catalog#:RS0002) was diluted at 1:20000



Western blot analysis of K562 using Dectin-2 antibody. Antibody was diluted at 1:1000. Secondary antibody(catalog#:RS0002) was diluted at 1:20000



Immunohistochemical analysis of paraffin-embedded human-heart, antibody was diluted at 1:200