

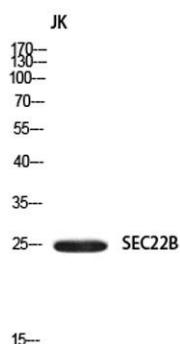
**SEC22B rabbit pAb****Cat#: orb771237 (Manual)**

For research use only. Not intended for diagnostic use.

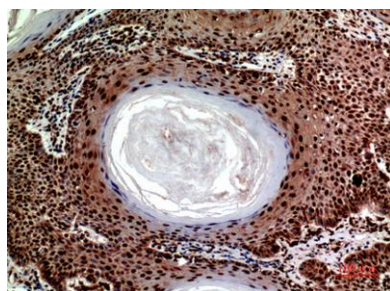
<b>Product Name</b>	SEC22B rabbit pAb
<b>Host species</b>	Rabbit
<b>Applications</b>	WB;IHC;IF;ELISA
<b>Species Cross-Reactivity</b>	Human;Mouse;Rat
<b>Recommended dilutions</b>	Western Blot: 1/500 - 1/2000. IHC-p: 1:100-1:300. ELISA: 1/10000. Not yet tested in other applications.
<b>Immunogen</b>	Synthesized peptide derived from the Internal region of human SEC22B.
<b>Specificity</b>	SEC22B Polyclonal Antibody detects endogenous levels of SEC22B protein.
<b>Formulation</b>	Liquid in PBS containing 50% glycerol, 0.5% BSA and 0.02% sodium azide..
<b>Storage</b>	Store at -20°C. Avoid repeated freeze-thaw cycles.
<b>Protein Name</b>	Vesicle-trafficking protein SEC22b
<b>Gene Name</b>	SEC22B
<b>Cellular localization</b>	Endoplasmic reticulum membrane ; Single-pass type IV membrane protein . Endoplasmic reticulum-Golgi intermediate compartment membrane . Golgi apparatus, cis-Golgi network membrane . Golgi apparatus, trans-Golgi network membrane . Melanosome . Concentrated
<b>Purification</b>	The antibody was affinity-purified from rabbit antiserum by affinity-chromatography using epitope-specific immunogen.

<b>Clonality</b>	Polyclonal
<b>Concentration</b>	1 mg/ml
<b>Observed band</b>	23kD
<b>Human Gene ID</b>	9554
<b>Human Swiss-Prot Number</b>	O75396
<b>Alternative Names</b>	SEC22B; SEC22L1; Vesicle-trafficking protein SEC22b; ER-Golgi SNARE of 24 kDa; ERS-24; ERS24; SEC22 vesicle-trafficking protein homolog B; SEC22 vesicle-trafficking protein-like 1

**Background** The protein encoded by this gene is a member of the SEC22 family of vesicle trafficking proteins. It seems to complex with SNARE and it is thought to play a role in the ER-Golgi protein trafficking. This protein has strong similarity to *Mus musculus* and *Cricetulus griseus* proteins.[provided by RefSeq, Sep 2009],



Western blot analysis of JK using SEC22B antibody. Secondary antibody(catalog#:RS0002) was diluted at 1:20000



Immunohistochemical analysis of paraffin-embedded human-skin, antibody was diluted at 1:100



Explore. Bioreagents.

[www.biorbyt.com](http://www.biorbyt.com)