

**NHERF-2 rabbit pAb****Cat#: orb771233 (Manual)**

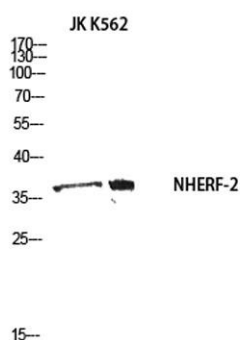
For research use only. Not intended for diagnostic use.

<b>Product Name</b>	NHERF-2 rabbit pAb
<b>Host species</b>	Rabbit
<b>Applications</b>	WB;ELISA
<b>Species Cross-Reactivity</b>	Human;Mouse;Rat
<b>Recommended dilutions</b>	Western Blot: 1/500 - 1/2000. ELISA: 1/10000. Not yet tested in other applications.
<b>Immunogen</b>	Synthesized peptide derived from NHERF-2 . at AA range: 20-100
<b>Specificity</b>	NHERF-2 Polyclonal Antibody detects endogenous levels of NHERF-2 protein.
<b>Formulation</b>	Liquid in PBS containing 50% glycerol, 0.5% BSA and 0.02% sodium azide..
<b>Storage</b>	Store at -20°C. Avoid repeated freeze-thaw cycles.
<b>Protein Name</b>	Na(+)/H(+) exchange regulatory cofactor NHE-RF2
<b>Gene Name</b>	SLC9A3R2
<b>Cellular localization</b>	Endomembrane system ; Peripheral membrane protein . Nucleus . Apical cell membrane . Localizes with EZR and PODXL at the apical cell membrane of glomerular epithelium cells and the sides of the food processes (By similarity). Nuclear, in a punctate pattern. .
<b>Purification</b>	The antibody was affinity-purified from rabbit antiserum by affinity-chromatography using epitope-specific immunogen.

<b>Clonality</b>	Polyclonal
<b>Concentration</b>	1 mg/ml
<b>Observed band</b>	37kD
<b>Human Gene ID</b>	9351
<b>Human Swiss-Prot Number</b>	Q15599
<b>Alternative Names</b>	SLC9A3R2; NHERF2; Na(+)/H(+) exchange regulatory cofactor NHE-RF2; NHERF-2; NHE3 kinase A regulatory protein E3KARP; SRY-interacting protein 1; SIP-1; Sodium-hydrogen exchanger regulatory factor 2; Solute carrier family 9 isoform A3 regulatory factor 2; T

## Background

This gene encodes a member of the NHERF family of PDZ scaffolding proteins. These proteins mediate many cellular processes by binding to and regulating the membrane expression and protein-protein interactions of membrane receptors and transport proteins. The encoded protein plays a role in intestinal sodium absorption by regulating the activity of the sodium/hydrogen exchanger 3, and may also regulate the cystic fibrosis transmembrane regulator (CFTR) ion channel. Alternatively spliced transcript variants encoding multiple isoforms have been observed for this gene. [provided by RefSeq, Nov 2011],



Western blot analysis of JK K562 using NHERF-2 antibody. Secondary antibody(catalog#:RS0002) was diluted at 1:20000