

SR-1D rabbit pAb**Cat#: orb771228 (Manual)**

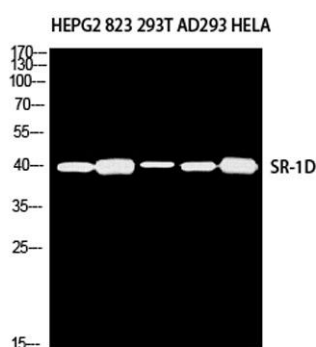
For research use only. Not intended for diagnostic use.

Product Name	SR-1D rabbit pAb
Host species	Rabbit
Applications	WB;IHC;IF;ELISA
Species Cross-Reactivity	Human;Mouse;Rat
Recommended dilutions	Western Blot: 1/500 - 1/2000. IHC-p: 1:100-1:300. ELISA: 1/10000. Not yet tested in other applications.
Immunogen	Synthesized peptide derived from SR-1D . at AA range: 120-200
Specificity	SR-1D Polyclonal Antibody detects endogenous levels of SR-1D protein.
Formulation	Liquid in PBS containing 50% glycerol, 0.5% BSA and 0.02% sodium azide..
Storage	Store at -20°C. Avoid repeated freeze-thaw cycles.
Protein Name	5-hydroxytryptamine receptor 1D
Gene Name	HTR1D
Cellular localization	Cell membrane ; Multi-pass membrane protein .
Purification	The antibody was affinity-purified from rabbit antiserum by affinity-chromatography using epitope-specific immunogen.
Clonality	Polyclonal

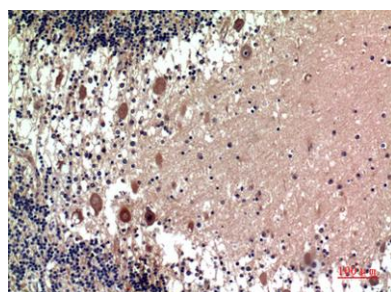
Concentration	1 mg/ml
Observed band	41kD
Human Gene ID	3352
Human Swiss-Prot Number	P28221
Alternative Names	HTR1D; HTR1DA; HTRL; 5-hydroxytryptamine receptor 1D; 5-HT-1D; 5-HT1D; 5-HT-1D-alpha; Serotonin receptor 1D

Background

function: This is one of the several different receptors for 5-hydroxytryptamine (serotonin), a biogenic hormone that functions as a neurotransmitter, a hormone, and a mitogen. The activity of this receptor is mediated by G proteins that inhibit adenylate cyclase activity., **similarity:** Belongs to the G-protein coupled receptor 1 family.,



Western blot analysis of HEPG2 823 293T AD293 HELA using SR-1D antibody. Antibody was diluted at 1:500. Secondary antibody(catalog#:RS0002) was diluted at 1:20000



Immunohistochemical analysis of paraffin-embedded human-brain, antibody was diluted at 1:100